



Foodservice Condensed Catalog



TOP REASONS TO SPECIFY T&S BRASS

24-Hour Quick Ship

Call in your order before noon for same day processing and fast turnaround. You never have to worry about downtime or finding room for inventory. We make sure your order arrives when you need it.

Outstanding Customer Service

A T&S trademark – our highly trained, friendly and knowledgeable staff answers your calls without delay. Established customers can also access T&S through E-Store, our online ordering website that gives you anytime, anywhere convenience with ordering, tracking shipments and more. Register today at <http://register.tsbrass.com>

Custom Engineering and Modifications

Our engineers have the technical expertise and qualifications to design and build to your specific requirements. When needed, we can customize your order, so with confidence we say, “We can make it like you want it and get it to you when you need it.”

Interchangeability

For more than 70 years, our products have been manufactured to work together – handles, spouts, inlets, aerators and accessories. Our interchangeable philosophy gives you exceptional flexibility and performance efficiencies that are unsurpassed. Our standardized parts allow you to carry less inventory.

Energy and Water Conserving Design

T&S understands how vital water conservation is today. We lead the way in the foodservice and plumbing industries with our extensive line of water- and energy-saving products that meet and exceed conservation requirements while not compromising performance.

East and West Coast Warehouses

Our warehouses are located on both coasts so we can serve you better and faster. Customer service representatives are available to take your calls between 8:00 a.m. EST and 5:00 p.m. PST.

Quality and Innovation

Founded on a commitment to quality and innovation, T&S Brass introduced the industry’s first pre-rinse unit. Ever since that time we have set the standard for new products designed to keep up with evolving applications while cutting installation time. Our heavy-duty brass castings and cartridges have proven themselves as long-term fixtures in many commercial applications. And we’re a leader on product safety.

Extensive Product Line

We offer an extensive range of products for practically every industry – from plumbing and foodservice to laboratory, institutional, medical and even the pet market. You’ll find T&S in restaurants, hospitals, schools and hotels around the world. Whatever your application needs, we’ve got you covered or we’ll work with you to create the best possible solution.

Rigorous Testing

At T&S, we test every single product we manufacture. Reliability Built In™ means nothing gets past us, and you’ll never have to worry about product performance.

Family Owned and Operated

Founded in 1947, T&S is a family owned and operated business committed to quality, innovation and the highest service to our customers. We manufacture products to solve real world problems and services designed to make your life simpler.

Codes and Compliances

T&S products are manufactured to the highest standards in the industry, and are certified by a wide variety of national and international organizations, such as ISO, CSA, UL, NSF, IAPMO, ASSE and the list goes on. We are committed to the safety and reliability of each fixture we make. When specific issues arise such as safe drinking water concerns* or water pressure limitations, you can trust us for solutions and products that are up to code.

* T&S products are ANSI/NSF Standard 61, Section 9 certified.





Conserve up to one gallon of water per hand wash with sensor faucets



Save \$4.75 GPM versus the competition with T&S dipper wells

WE KNOW SUSTAINABILITY.



Choose the right flow restrictor to save water with any faucet



Switch to low flow spray valves and save time, water, energy and labor

That's why you can trust T&S to help conserve both natural and financial resources.

Today's green building projects require products that last longer, use less and conserve more. From low-flow pre-rinse spray valves and electronic sensor faucets to aerators, cartridges and more, you can count on T&S for reliable, low-flow plumbing solutions, all manufactured responsibly. Because it's not just about how well it works — it's about how well it's made.

When it comes to sustainability, water and energy conservation is just the start. Learn more about the big picture at tsbrass.com/sustainability today.



Low-flow products from T&S Brass can help earn points in multiple categories toward LEED certification.



Meet the Newest T&S Pre-Rinse Line!

DURAPULL

Our Pull Down Pre-Rinse Units Are the Latest in T&S Innovations

When high volume demands the highest performance, T&S delivers an all-new line of reliable pre-rinse units. With a premium design that feels right at home in any high-end kitchen, each T&S pre-rinse unit offers pull-down activation that allows users to easily switch water flow on and off.

Not only does the unit's pull-down activation and automatic shut-off function reduce stress and fatigue on the operator, it also eliminates the spray valve handle and hold-down ring – making it easy to conserve water.

NEW! T&S Pull Down Pre-Rinse Unit Models

Model	Mount	Cartridge	Add-On Fct.	Tee
B-0113-CR-B8P	Single hole	Cerama	N	N
B-0113-12-CRB8P	Single hole	Cerama	Y*	N
B-0113-CR-B8TP	Single hole	Cerama	N	Y
B-0113-12-CRB8TP	Single hole	Cerama	Y*	Y

B-0123-CR-B8P	8" Deck	Cerama	N	N
B-0123-12-CRB8P	8" Deck	Cerama	Y*	N
B-0123-CR-B8TP	8" Deck	Cerama	N	Y
B-0123-12-CRB8TP	8" Deck	Cerama	Y*	Y

B-0133-CR-B8P	8" Wall	Cerama	N	N
B-0133-12-CRB8P	8" Wall	Cerama	Y*	N
B-0133-CR-B8TP	8" Wall	Cerama	N	Y
B-0133-12-CRB8TP	8" Wall	Cerama	Y*	Y

B-5110-CR-B8P	4" Deck	Cerama	N	N
B-5110-12-CRB8P	4" Deck	Cerama	Y*	N
B-5110-CR-B8TP	4" Deck	Cerama	N	Y
B-5110-12-CRB8TP	4" Deck	Cerama	Y*	Y

B-5115-CR-B8P	4" Wall	Cerama	N	N
B-5115-12-CRB8P	4" Wall	Cerama	Y*	N
B-5115-CR-B8TP	4" Wall	Cerama	N	Y
B-5115-12-CRB8TP	4" Wall	Cerama	Y*	Y

B-5120-CR-B8P	8" Deck	Cerama	N	N
B-5120-12-CRB8P	8" Deck	Cerama	Y*	N
B-5120-CR-B8TP	8" Deck	Cerama	N	Y
B-5120-12-CRB8TP	8" Deck	Cerama	Y*	Y

B-5125-CR-B8P	8" Wall	Cerama	N	N
B-5125-12-CRB8P	8" Wall	Cerama	Y*	N
B-5125-CR-B8TP	8" Wall	Cerama	N	Y
B-5125-12-CRB8TP	8" Wall	Cerama	Y*	Y

* All Add-On Faucets include a 12" swing nozzle



1.07 GPM Spray valve flow rate meets 2019 DOE regulations



B-0113-12-CRB8P
Pull Down Pre-Rinse Unit

Easy Install



ALL PULL DOWN MODELS FEATURE:

- Dual temperature
- Cerama cartridges
- Sprayer (1.07 GPM)
- Pull down activation and automatic shut-off
- 7-YEAR warranty

DURAPULL

**UNPARALLELED
RELIABILITY**

7 7-year warranty



SAME
HEIGHT AND
REACH
as traditional
pre-rinse
units

SIMPLY
PULL
DOWN
to activate
water

SWIVEL
allows 360°
rotation of
spray valve

Highly
DURABLE
CERAMIC
CARTRIDGES
come
standard

RIGOROUS
LIFECYCLE
TESTING
far exceeds
industry
standards

B-0133-12-CRB8P
Pull Down Pre-Rinse Unit

EasyInstall

EasyInstall Pre-Rinse Assemblies with "Pop-and-Lock" Riser Installation means installation is easy and fast and is a standard feature of T&S pre-rinse units.

Easy Install

B-0113-12CRBJST Pre-Rinse Unit

- Deck mount base faucet
- 12" add-on faucet
- Ceramic cartridges
- B-0107-J Low flow spray valve (1.07 GPM)
- Pre-rinse swivel
- Accessory tee
- Wall bracket

2019 DOE Compliant

12" Add-on faucet

New! Cartridges come standard with cross flow prevention

New! Redesigned bonnet, handles, indexes (see p. 7)

Ceramic cartridges

Swivel

Wall bracket

Accessory tee

EasyInstall "Pop-and-Lock" riser installation



Accessory tee

New! Redesigned full flow laminar flow outlet

Easy Install

B-0133-12CRBJST Pre-Rinse Unit

- Wall mount base faucet
- 12" add-on faucet
- Ceramic cartridges
- B-0107-J Low flow spray valve (1.07 GPM)
- Pre-rinse swivel
- Accessory tee
- Wall bracket
- Inlet kit for wall-mount installation (B-0230-K)

2019 DOE Compliant

Swivel

018200-40

Wall-mount inlet kit

B-0230-K



Easy Install

B-0113 EasyInstall Pre-Rinse Unit (shown)

- Single hole base faucet with 18" (457 mm) supply lines and "pop-and-lock" riser installation feature – pre-assembled parts
- 1/2" NPSM male inlets / 5/8" compression fittings
- B-0107 spray valve (1.15 GPM) ; B-0044-H flex stainless steel hose

B-0113-B EasyInstall Pre-Rinse Unit

- Includes B-0109-01 6" wall bracket

B-0113-B-SWV EasyInstall Pre-Rinse Unit

- Includes B-0109-01 6" wall bracket; (018200-40) pre-rinse swivel



Easy Install

B-0133 EasyInstall Pre-Rinse Unit (shown)

- 8" (203 mm) center wall mount faucet (002832-40) with "pop-and-lock" riser installation feature – pre-assembled parts
- 1/2" NPT female eccentric flanged inlets (00AA)
- B-0107 spray valve (1.15 GPM); B-0044-H flex stainless steel hose

B-0133-B EasyInstall Pre-Rinse Unit

- Includes B-0109-01 6" wall bracket

B-0133-CR-BJ-SWV EasyInstall Pre-Rinse Unit

- Same as B-0133 except with Cerama cartridges, B-0107-J low-flow spray valve (1.07 GPM) and pre-rinse swivel



Easy Install

MPZ-2DLN-06 Low Profile Pre-Rinse Unit

- Single deck-mount base faucet
- 6" swing nozzle with add-on faucet
- Compact spring and hose
- B-0107 spray valve (1.15 GPM)
- Wall bracket (B-0109-01)
- Low profile fits in limited spaces



NEW! Our **EasyInstall Workboard Pre-Rinse Assemblies** with “Pop-and-Lock” Riser Installation have the same high-quality features you find in our existing T&S pre-rinse. Also new are our **T&S Workboard Low Profile Pre-Rinse Units** that work perfectly where space is tight in your busy kitchen.

Easy Install

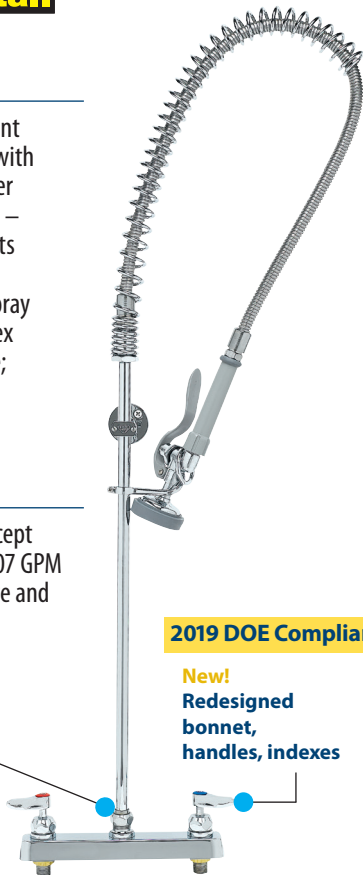
B-5120-B Workboard Pre-Rinse Unit

- 8” center deck mount workboard faucet with “pop-and-lock” riser installation feature – pre-assembled parts
- ½” NPT male inlets
- B-0107 1.15 GPM spray valve; B-0044-H flex stainless steel hose; wall bracket

B-5120-12-BJ Workboard Pre-Rinse Unit

- Same as B-5120 except with a B-0107-J 1.07 GPM low flow spray valve and 12” add-on faucet

EasyInstall “Pop-and-Lock” riser installation



2019 DOE Compliant

New! Redesigned bonnet, handles, indexes

Easy Install

B-5125-12-BJ Workboard Pre-Rinse Unit

- 8” center wall mount workboard faucet with “pop-and-lock” riser installation feature – pre-assembled parts
- 12” add-on faucet
- ½” NPT male inlets
- B-0107-J 1.07 GPM spray valve; B-0044-H flex stainless steel hose

B-1525-B Workboard Pre-Rinse Unit

- Same as B-5125-12-BJ except with a B-0107 1.15 GPM spray valve and without add-on faucet

New! Redesigned full flow laminar flow outlet



12” Add-on faucet

New! Cartridges come standard with cross flow prevention

Easy Install



Bonnet

Handles and Indexes



2019 DOE Compliant

Workboard Pre-Rinse Unit Models

Model	Mount	Cartridge	12” ADF	Spray Valve
B-5125-12-B	8” Wall	Eterna	Y	B-0107
B-5125-12-BJ	8” Wall	Eterna	Y	B-0107-J
B-5125-B	8” Wall	Eterna	N	B-0107
B-5125-BJ	8” Wall	Eterna	N	B-0107-J
B-5125-12-CR-B	8” Wall	Cerama	Y	B-0107
B-5125-12-CRBJ	8” Wall	Cerama	Y	B-0107-J
B-5125-CR-B	8” Wall	Cerama	N	B-0107
B-5125-CR-BJ	8” Wall	Cerama	N	B-0107-J
B-5120-12-B	8” Deck	Eterna	Y	B-0107
B-5120-12-BJ	8” Deck	Eterna	Y	B-0107-J
B-5120-B	8” Deck	Eterna	N	B-0107
B-5120-BJ	8” Deck	Eterna	N	B-0107-J
B-5120-12-CR-B	8” Deck	Cerama	Y	B-0107
B-5120-12-CRBJ	8” Deck	Cerama	Y	B-0107-J
B-5120-CR-B	8” Deck	Cerama	N	B-0107
B-5120-CR-BJ	8” Deck	Cerama	N	B-0107-J

Low Profile Workboard Pre-Rinse Unit Models

Model	Mount	Cartridge	8” ADF	Spray Valve
MPJ-4CLN-08-CR	4” Deck	Cerama	Y	B-0107-J
MPJ-8CLN-08-CR	8” Deck	Cerama	Y	B-0107-J

All Pre-rinse Units listed above are standard with lever handles and a B-0109-01 6” wall bracket

Easy Install

MPJ-4CLN-08-CR Low Profile Pre-Rinse Unit

- 4” center deck mount base faucet
- 6” swing nozzle with add-on faucet
- Compact spring and hose
- B-0107 spray valve (1.15 GPM)
- Wall bracket (B-0109-01)
- Low profile fits in limited kitchen spaces



RELIABILITY BUILT IN™

2019 DOE Compliant

**B-0107
Spray Valve**

- Flow Rate – 1.15 GPM (4.35 Lpm) @ 60 PSI (4.14 bar)
- Spray Force – 7.5 Ozf (212 Gramf) @ 60 PSI (4.14 bar)
- Connects directly to T&S handle assembly
- Designed for heavy use in commercial kitchens
- Shuts off when handle is released

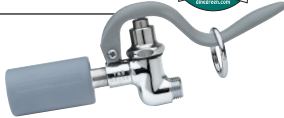


SAVE ENERGY
WATER
MONEY



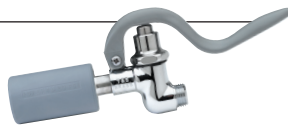
**B-0107-C
Ultimate Low Flow Spray Valve**

- Flow Rate – 0.65 GPM (2.5 Lpm) @ 60 PSI (4.14 bar)
- Spray Force – 4.4 Ozf (125 Gramf) @ 60 PSI (4.14 bar)



**B-0107-J
Low Flow Spray Valve**

- Flow Rate – 1.07 GPM (4.1 Lpm) @ 60 PSI (4.14 bar)
- Spray Force – 4.4 Ozf (125 Gramf) @ 60 PSI (4.14 bar)
- Low flow spray valve with powerful cleaning ability



**B-0108
JeTSpray Valve**



- Flow Rate – 1.07 GPM (4.1 Lpm) @ 60 PSI (4.14 bar)
- Spray Force – 4.4 Ozf (125 Gramf) @ 60 PSI (4.14 bar)
- Ergonomic design helps reduce fatigue caused by repetitive tasks
- Forged brass body
- Fast action stainless steel trigger
- Retrofits most commercial pre-rinse units and hoses



**B-0108-C
Low Flow JeTSpray Valve**



- Flow Rate – 0.65 GPM (2.5 Lpm) @ 60 PSI (4.14 bar)
- Spray Force – 4.6 Ozf (130 Gramf) @ 60 PSI (4.14 bar)
- Ergonomic design helps reduce fatigue caused by repetitive tasks
- Forged brass body
- Fast action stainless steel trigger
- Retrofits most commercial pre-rinse units and hoses



**B-0156
Add-On Faucet for Pre-Rinse Units**

- Standard add-on faucet swing nozzle can be added to pre-rinse units
- 12" (305 mm) swing nozzle (062X)
- Includes 3" (76 mm) nipple to install on existing base faucets (000358-40)



Note: A B-0156 increases the height of a pre-rinse unit by approximately 4½" (114 mm). Different nozzle lengths furnished upon request – single- or double-jointed.

**B-TEE-RGD
Accessory Tee Assembly**

- Rigid tee assembly for T&S pre-rinse units
- Chrome plated tee can be retrofitted to existing pre-rinse
- Provides additional water source for accessory applications such as chemical injectors (for cleaning jobs, etc.)



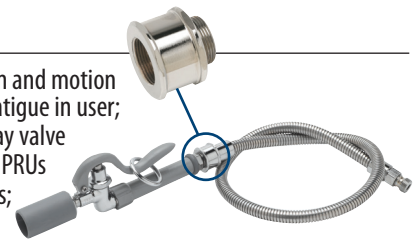
**B-0230-K
B-0230 Series Faucet Installation Kit**

- Kit includes (2) of each:
- ½" NPT supply nipples
- Lock nuts
- Lock washers
- ½" NPT male x female short elbows



**018200-40
Pre-Rinse Swivel**

- Swivel allows 360° rotation and motion
- Cuts down on strain and fatigue in user; extends the life of the spray valve
- Factory installed on select PRUs and spray valve assemblies; can be easily retrofitted when ordered separately



Note: Hose and spray valve are not included

**B-0044-H
Stainless Steel Hose**

- Flexible stainless steel hose; 44" (1117 mm) long with heat resistant handle
- Inner polyurethane tubing
- Supplied on most pre-rinse units with spring action gooseneck



**B-0100-SWV
Spray Valve Assembly with Swivel**

- Flow Rate – 1.15 GPM (4.35 Lpm) @ 60 PSI (4.14 bar)
- Spray Force – 7.5 Ozf (212 Gramf) @ 60 PSI (4.14 bar)
- Swivel allows 360° rotation and motion
- Reduces strain and fatigue in user; extends life of spray valve and hose
- Flexible stainless steel hose; 44" (1117 mm)
- Hold-down ring for continuous use



Note: Swivel is factory installed on select PRUs and spray valve assemblies; can be easily retrofitted

All **T&S ChekPoint Electronic Sensor Faucets** include:
NEW Low flow outlet options: 0.5 GPM non-aerated outlet (-VF05) and 1.2 GPM aerated outlet (-VF12)
 • Standard 2.2 GPM vandal resistant aerator
 • AC/DC control Module (electric plug-in and battery)
 • Adjustable automatic time-out feature
 • Hands-free washing conserves water and reduces risk of contamination



• Adjustable temperature control mixing valve
 • EC-HYDROGEN Models: Add "-HG" for hydrogenerator option which generates and stores its own power through the flow of water
 • Existing ChekPoint faucets can be retrofitted with EC-HYDROGEN kit
 • **NEW** Low flow EC-HYDROGEN-LF available for select ChekPoint faucets that require 1.0 GPM flow rate or less (see below)

EC-3100 Deck Mount Electronic Faucet

• Deck mount electronic sensor faucet with rigid gooseneck



EC-3101 Wall Mount Electronic Faucet

• Wall mount electronic sensor faucet with rigid gooseneck



EC-3102 Deck Mount Electronic Faucet

• Deck mount electronic sensor faucet with cast spout



EC-3103 Deck Mount Electronic Faucet

• Deck mount electronic sensor faucet with cast spout



EC-3104 Deck Mount Electronic Faucet

• Designed for 4" c/c two-hole installations
 • Water-saving models with 0.5 GPM and 2.2 GPM aerators



EC-3130 and EC-3132 ChekPoint Faucets with Above Deck Electronics (ADE)

• Single hole above deck sensor faucets with above deck temperature control/optional side control lever
 • Adjustable timed water flow
 • Choice of low flow and vandal-resistant outlets
 • Hydrogenerator models
 • 4" and 8" deckplate models
 • Designed for easy control, installation and maintenance



EC-3130-4DP

EC-3105 Wall Mount Electronic Faucet

• Designed for 4" c/c two-hole installations
 • Water-saving models with 0.5 GPM and 2.2 GPM aerators



EC-3142 ChekPoint Faucet with Above Deck Electronics (ADE)

• Single hole above deck sensor faucets with above deck temperature control/optional side control lever
 • Adjustable timed water flow
 • Choice of low flow and vandal-resistant outlets
 • Hydrogenerator models
 • 4" and 8" deckplate models
 • Designed for easy control, installation and maintenance



EC-3142

EC-HYDROGEN-LF Low Flow Hydrogenerator Accessory for select ChekPoint Electronic Faucets

NEW!

• Accessory for select ChekPoint™ Electronic Sensor Faucets with a flow rate of 0.5 to 1.0 GPM
 • Includes generator and (1) 1/2 NPSM swivel coupling
 • 71" (1800 mm) power cord with male plug connects to control module
 • Up to ten years of battery lifespan
 • Requires a minimum of ten activations a day at a minimum of both 0.5 GPM and 20 PSI to maintain charge



Note: Flow rate of 0.5 – 1.0 GPM is required for applications using EC-HYDROGEN-LF.

EC-HYDROGEN Hydrogenerator Accessory for ChekPoint Electronic Faucets

• Generates power through the flow of water
 • 1/2" NPSM male inlet and outlet
 • Add "-HG" to above models; ex.: EC-3100-HG
 • Can also be added to existing ChekPoint faucet

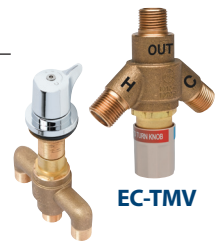


EC-SMT and EC-TMV Thermostatic Mixing Valves for ChekPoint Electronic Faucets

• Adds thermostatic mixing valve to T&S ChekPoint faucets, above and below-deck installation

EC-SMT provides ease of above deck point-of-use temperature adjustment (for EC-3100 and EC-3102 family of faucets)

EC-TMV provides below deck thermostatic valve for any ChekPoint faucet (add -TMV suffix to model)



EC-SMT

EC-TMV

**B-0207
Pantry Faucet**

- Deck mount faucet
- Swing nozzle with 6" (152 mm) length (059X)
- Lever handle with blue color coded index
- ½" NPSM male shank
- ¼" NPT union-type tailpiece



**B-0231
Double Pantry Faucet**

- 8" (203 mm) centers wall mount pantry faucet
- Lever handles
- Swing nozzle with 12" (305 mm) length (062X)
- ½" NPT eccentric flanged female inlets



**B-0221
Double Pantry Faucet**

- 8" (203 mm) centers deck mount mixing faucet
- Swing nozzle with 12" (305 mm) length (062X)
- Lever handles
- ½" NPT eccentric flanged female inlets



**B-0231-CR-K-F15
Double Pantry Faucet**

- Same as B-0231 except with Quarter-turn Cerama cartridges with check valves, 1.5 GPM aerator and B-0230-KIT with ½" NPT male inlets and (2) flexible supply hoses

**B-1210
Pedestal Push Back Single Glass Filler**

- Countertop mounted glass filler
- 2" adjustable flange on shank of pedestal
- ½" NPT male shank
- Torx wrench adjustable flow outlet (wrench included)
- Push back actuation arm; instantaneous shut-off



**BF-0299-12
Big-Flo Single Temperature Faucets**

- Wall mount models for pot sinks and kettles
- 12" Big-Flo swing nozzle
- ¾" NPT female inlet and ¾" NPT street elbow
- Comes in different length swing nozzles from 6"-18" and double-joint nozzles from 18"-24"
- Designed for when you need a high volume of water quickly



**B-0665-BSTR
Service Sink Faucet**

- 8" (203 mm) centers wall mount service sink faucet with rough chrome plated finish
- Eterna cartridges with spring checks
- Lever handles
- Built in screwdriver stops
- Pail hook and garden hose male outlet
- ½" NPT vacuum breaker (B-0969)
- ½" NPT eccentric flanged female inlets

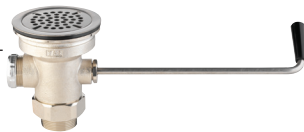


**B-2282-01
Dipperwell Faucet and Bowl**

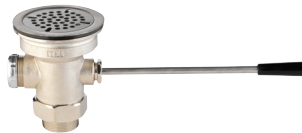
- Faucet is heavy-duty chrome plated brass with twist handle
- Bowl is stainless steel internal cup; outer container and tail washer
- Bowl sits flush with tabletop; drains quickly and easily through 1½" x 4" brass tubing
- Flow control options available (ex.: B-2282 -01-F05)



**B-3950
Waste Valve with Twist Handle and Drain Adapter**



**B-3970
Waste Valve with Lever Handle and Drain Adapter**



- B-3950 and B-3970:**
- Brass valve body construction
 - Includes overflow outlet and cap
 - Valve bodies – standard 2" outlet
 - Also available with reducer that allows for 1½" or 2" outlet
 - 3" or 3½" sink opening applications

**B-3950-VR
Waste Valve with Twist Handle**

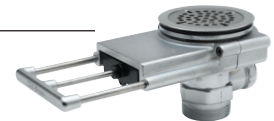
- Same as B-3950 except with vandal-resistant flat strainer; recessed 1/8" hex screw requires hex key for installation and removal of strainer

**B-3970-VR
Waste Valve with Lever Handle**

- Same as B-3970 except with vandal-resistant flat strainer; recessed 1/8" hex screw requires hex key for installation and removal of strainer

**B-3990 (shown)
Modular Waste Valve**

- 2" NPT female / 1½" NPT male adapter included



**B-3992
Modular Waste Valve**

- 2" NPT male / 1½" NPT female outlet

- B-3990 and B-3992:**
- Modular design for easy installation and maintenance
 - Premium modular waste valves; push-pull valve handle activation
 - Both for 3½" sink opening; large opening accommodates high volume



Bonnet



NEW DESIGN!

Easy Install

Our newly redesigned B-1100 Series Workboard Faucets feature:

- T&S Eterna cartridges (instead of spindle assemblies)
- Water-saving 2.2 GPM aerator (instead of stream regulator)
- Heavy-duty forged brass bodies
- Polished chrome plated escutcheon
- New updated look for handles, indexes and bonnets
- New design for ease of maintenance/repair
- Come standard with new design lever handles and wall bracket



B-1100 Workboard Faucet

- 3½" deck mount workboard faucet
- Quarter-turn Eterna cartridges with spring checks
- Lever handles
- 6" swing nozzle
- ½" NPT male inlets
- Optional tailpieces and nuts for ¼" NPT connection



B-1100

B-1115 Workboard Faucet

- 4" wall mount workboard faucet
- Quarter-turn Eterna cartridges with spring checks
- Lever handles
- 6" swing nozzle
- ½" NPT male inlets
- Optional tailpieces and nuts for ¼" NPT connection



B-1115

B-1110-XS-V12CR Workboard Faucet

- 4" deck mount workboard faucet
- Quarter-turn Cerama cartridges with check valves
- Vandal-resistant 1.2 GPM aerator
- Lever handles
- 6" swing nozzle
- ½" NPSM extended male inlets (not shown)
- Optional tailpieces and nuts for ¼" NPT connection



B-1110-XS-V12CR

B-1146 Workboard Faucet

- 4" wall mount workboard faucet
- Quarter-turn Eterna cartridges with spring checks
- Lever handles
- 5¾" swivel gooseneck
- ½" NPT male inlets
- Optional tailpieces and nuts for ¼" NPT connection



B-1146

B-1141 Workboard Faucet

- 4" deck mount workboard faucet
- Quarter-turn Eterna cartridges with spring checks
- Lever handles
- 5¾" swivel gooseneck
- ½" NPT male inlets
- Optional tailpieces and nuts for ¼" NPT connection



B-1141

B-1146-V12-CR Workboard Faucet

- 4" wall mount workboard faucet
- Quarter-turn Cerama cartridges with check valves
- Vandal-resistant 1.2 GPM aerator
- Lever handles
- 5¾" swivel gooseneck
- ½" NPT male inlets
- Optional tailpieces and nuts for ¼" NPT connection



B-1146-V12-CR

EW-7656WC Recessed Wall Mount Eye/Face Wash Unit by Haws

- Stainless steel recessed wall mount eye/face wash with polished chrome plated brass pull-down valve with strainer
- 4.2 GPM flow control
- ½" NPT inlet
- 2" NPT waste outlet



EW-7360B Wall-Mount Eye/Face Wash – Emergency Safety Equipment by Haws

- ABS green plastic eyewash head with built-in 2.5 GPM flow control
- Integral flip top dust cover automatically releases with flow of water
- Round stainless steel receptor and chrome plated brass stay open ball valve
- ½" IPS inlet and outlet, 1¼" IPS waste
- Includes universal emergency eyewash sign and test tag



All T&S Safe-T-Link Gas Hoses have:

- Welded fittings remain gas tight and are designed for a long life
- Extruded coating keeps a constant wall thickness providing strength and flexibility
- Safest stainless braid protects inner hose from pressure, stress and punctures
- Selection of fittings available for many applications • Limited 5 year warranty

SAFE-T-LINK

Safe-T-Link Gas Appliance Connectors

- **HG-2 Series** – two FreeSpin fittings (360° rotation)
- **HG-2S Series** – two SwiveLink fittings (increased mobility/space saving)
- **HG-4 Series** – one quick-disconnect
- **HG-4S Series** – one quick-disconnect, two SwiveLink fittings
- **HG-6 Series** – reversed quick-disconnect fitting
- Installation kit (-K) and accessories available
- Various diameters/hose lengths available; see Safe-T-Link brochure or T&S General Catalog



SwiveLink

SwiveLink Gas Hose Fitting

- Standard on both gas hose ends
- Freely rotates 360° even when tight, ending twisted hoses

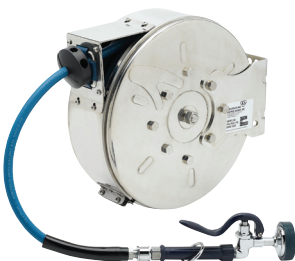


T&S Hose Reel models include:

- EB-0107 blue spray valve with heat-resistant handle (-01 models)
- 3/8" NPT female inlet
- Adjustable hose bumper
- Includes swivel to allow for 360° rotation of spray device
- Multi-fit bracket for wall, ceiling or under counter mounting
- Ratcheting system holds the length of hose until a slight tug; retracts automatically

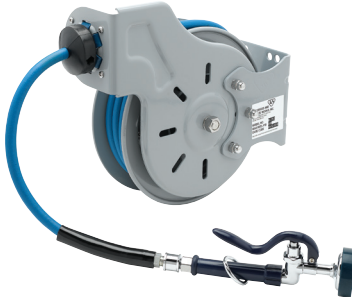
B-7122-C01 Stainless Steel Enclosed Hose Reel

- Enclosed reel with stainless steel finish
- 30' (9 m) of heavy-duty blue hose, 3/8" I.D.



B-7222-C01 Epoxy Coated Enclosed Hose Reel

- Enclosed reel with epoxy coated steel finish
- 30' (9 m) of heavy-duty blue hose, 3/8" I.D.



B-7132-01 Stainless Steel Open Hose Reel

- Open reel with stainless steel finish
- 35' (10.7 m) of heavy-duty blue hose, 3/8" I.D.



B-7132-02 Stainless Steel Open Hose Reel

Same as B-7132-01 except with MV-2516 rear trigger water gun (-02)

B-7232-01 Epoxy Coated Open Hose Reel

- Open reel with epoxy coated steel finish
- 35' (10.7 m) of heavy-duty blue hose, 3/8" I.D.



NEW T&S Complete Hose Reel Systems models!

See Complete T&S Hose Reel Systems features, configurations, Smart Number Key and Available Models on pages 14-15.

B-7143-05
1/2" Open Stainless Steel Hose Reel

- Open reel with stainless steel finish
- 1/2" x 50' heavy-duty blue hose
- MV-2522 stainless steel blue front trigger water gun (-05)



B-7102-01
12' Compact Open Stainless Steel Hose Reel

- Open reel with stainless steel finish; 12' (3.6 m) hose, 3/8" I.D.
- Lightweight, compact professional grade hose reel for use where space is a premium
- Fill your dipperwells, clean out dish machines and spray down combi ovens with this hose reel
- Mount under counter or in any other small space



B-7161-C
Combi Oven Light-Duty 6' Hose Reel

- Stainless steel housing; 6' hose, 1/4" I.D.
- Lightweight, compact professional grade hose reel
- Single stream spray valve and easy access shut-off valve



G018477-45
Heavy-Duty Hose Reel Table Leg Swing Bracket

- Mounts on table with 1 5/8" diameter fixed lower cross brace
- Allows for 210° right- or left-hand rotation of standard hose reel
- Spring-loaded latch locks bracket into multiple positions



ORK1
Mixing Valve

- Mixing valve with removable seats
- Rough chrome finish
- 1/2" NPT female inlets; 3/8" NPT female outlet
- 4" centers

Note: Check valves should be installed in lines leading to ORK1



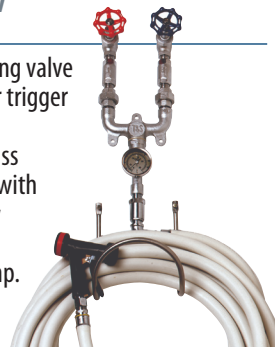
B-0512
Shut-Off Control Valve

- Wall mount control valve, 3" centers
- Eterna cartridges, 4-arm handles with hot and cold color coded indexes



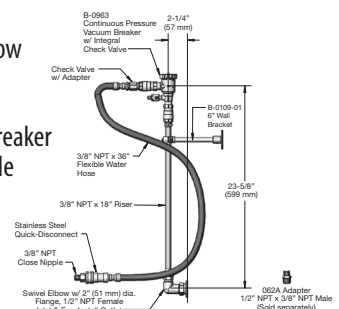
MV-0771-12CW
Mixing Valve

- MV-0771-12C mixing valve
- Stainless steel rear trigger water gun
- Chrome plated brass thermometer tee with hose swivel elbow
- Stainless steel thermometer, temp. range 0°-200°F
- 50 ft. white creamery hose
- Stainless steel hose rack



ORK-SK
Hose Reel Connector Kit

- Kit includes (1) each:
- 1/2" NPT female elbow
 - 3/8" NPT x 18" riser
 - B-0963 continuous pressure vacuum breaker
 - 3/8" NPT x 36" flexible water connector
 - Quick-disconnect



All T&S Water Guns are:

- Heavy-duty stainless steel construction, designed for a long life
- Adjustable stream from solid to soft spray
- Excellent for clean-up jobs
- Have automatic shut-off (conserves energy)
- Rated up to 200 PSI
- To order bracket, add suffix to water gun model (ie.: MV-2516-C02)

MV-2516
Rear Trigger Water Gun

- Specify as "-02" on open hose reel model; "-C02" on enclosed hose reel model



MV-2522
Front Trigger Water Gun

- Specify as "-05" on open hose reel model; "-C05" on enclosed hose reel model



T&S Hose Reel Options / Brackets include:

- For wall-mount applications; allows movement from right to left
- Note specs for different sized hose reels
- To order bracket, add suffix to hose reel model (ie.: B-7232-01-PSB)

EasyInstall

G019430-45
Stainless Steel EasyInstall Swing Bracket (-ESB)

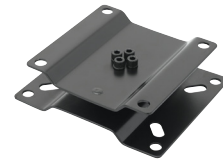
NEW!

- Universal hose reel bracket for mounting hose reels under counter or wall
- Fits all T&S 3/8" and 1/2" T&S hose reels



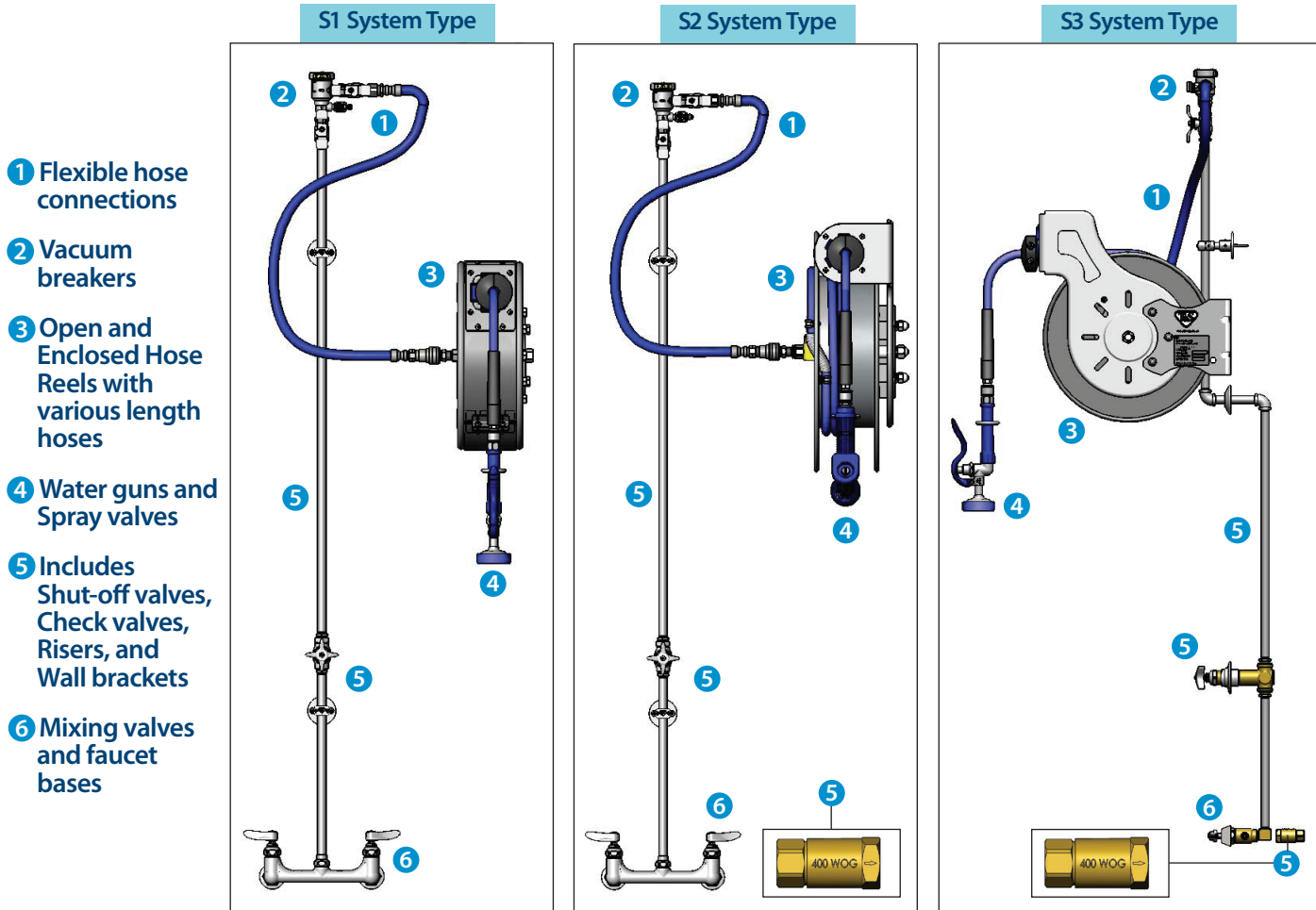
G016652-45
Swing Bracket (-PPB)

- Epoxy coated black steel
- Fits all T&S 1/4, 3/8" and 1/2" hose reels



The best choice to ensure code compliance and efficiency

We offer a wide selection of Complete Hose Reel System models



T&S can help you configure a custom system based on your needs with a wide variety of options



Celebrating
70 Years
 of Quality and Innovation

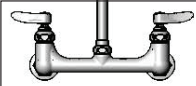



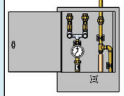
Smart Number Key for Complete T&S Hose Reel Systems

Example:

B-7 2 3 2 - U 01 W S1 E

Reel Material 1 = Stainless Steel 2 = Painted Steel	Hose Length – 3/8" Diameter Options 1 = 15' (open models only) 2 = 30' (closed models only) 3 = 35' (open models only) 4 = 50' 1/2" Diameter Options 3 = 35' (open models only) 4 = 50'	Diameter 2 = 3/8" 3 = 1/2" (stainless models only) Reel C = Closed (3/8" only) U = Open	Spray Valve -01 = EB-0107 -1L = B-0107 -02 = MV-2516-24 -03 = MV-2516-34 -04 = MV-2516-44 -05 = MV-2522-24 -06 = MV-2522-34 -07 = MV-2522-44 -08 = B-0108-H -8L = B-0108 -10 = EB-2322 -11 = MV-3516-24	Mounting Brackets P = Pivot/Ceiling Bracket W = Wall Swing Bracket T = Table Leg Bracket X = No Bracket	System Type* See chart below	Cartridge Type E = Eterna C = Cerama
--	--	--	--	--	--	---

*System Type:

S1 8" Wall Mount 	S2 8" Wall Mount In-line Check Valves 	S3 Concealed Base with Check Valves 	S4 8" Deck Mount 	S5 Cabinet 
---	--	---	---	---

Model (for example): **B-7232-U01XS1E** **B-7232-U01XS2E** **B-7232-U01XS3** (Cartridge option N/A for S3) **B-7232-U01WS4E** **B-7232-U01XS5** (Cartridge option N/A for S5)

T&S Hose Reel Systems Models

B-7122-C01XS1E	B-7222-C01XS1E	B-7232-U01XS3
B-7212-U01WS1E	B-7232-U01WS1E	B-7232-U01WS4E
B-7212-U01XS1E	B-7232-U01XS1E	B-7232-U01XS4E
B-7212-U01WS2E	B-7232-U01WS2E	B-7232-U01WS5
B-7212-U01XS2E	B-7232-U01XS2E	B-7232-U01XS5
B-7212-U01XS3	B-7232-U01WS3	B-7232-U05XS1E

T&S BRASS FOODSERVICE PRODUCTS

Warranty

Warranty

All T&S products are warranted to be free from defects in material and workmanship for a period of one (1) year from the date of purchase. Liability is limited thereunder to factory repair and/or replacement of material found to be defective, after examination by T&S, during the warranty period. No claims for labor, shipping costs or consequential damages will be accepted or honored.

Replacement and/or repair under this warranty will be made within a reasonable period of time after receipt by T&S of the allegedly defective item. Items which have received secondary finishing or have been altered in any way after purchase are not covered by this warranty. Claims resulting from damaged cartons must be filed with the carrier. Some states do not allow



limitations on how long an implied warranty lasts or on the exclusion of incidental or consequential damages, so all the limitations or exclusions appearing herein may not be permitted by your state and, therefore, your local statutes should be consulted with respect thereto or with respect to any other rights which your state statutes may specifically confer on you.

After receiving proper authorization, all returns of merchandise which are claimed defective under this warranty must be sent to T&S Brass and Bronze Works, Inc., P.O. Box 1088, 2 Saddleback Cove, Travelers Rest, South Carolina 29690, clearly marked to the attention of the Warranty Repair Department. Shipping charges, both ways, shall be paid by the customer.



RELIABILITY BUILT IN™



A HISTORY OF EXCELLENCE

T&S Brass and Bronze Works has built a reputation for quality, service and innovation for nearly 70 years – beginning with our original pre-rinse unit, the market’s very first. Today, our products have become the standard for many U.S. hospitals, schools, restaurants, supermarkets and public facilities.

T&S products are highly acclaimed throughout the industry for being well-built, long-lasting and reliable. Rigorous testing and a focus on interchangeability have helped set T&S apart from the competition.

T&S BRASS AND BRONZE WORKS, INC.

2 Saddleback Cove • P.O. Box 1088 • Travelers Rest, SC 29690

U.S. Toll-free 800-476-4103 • +1 864-834-4102 • Fax 800-868-0084

E-mail customerservice@tsbrass.com

Canada Toll-free 888-288-0432

