

GGB VENTURES INTERNATIONAL INC.



GGB VENTURES INTERNATIONAL INC.

'Over 65 years of experience'

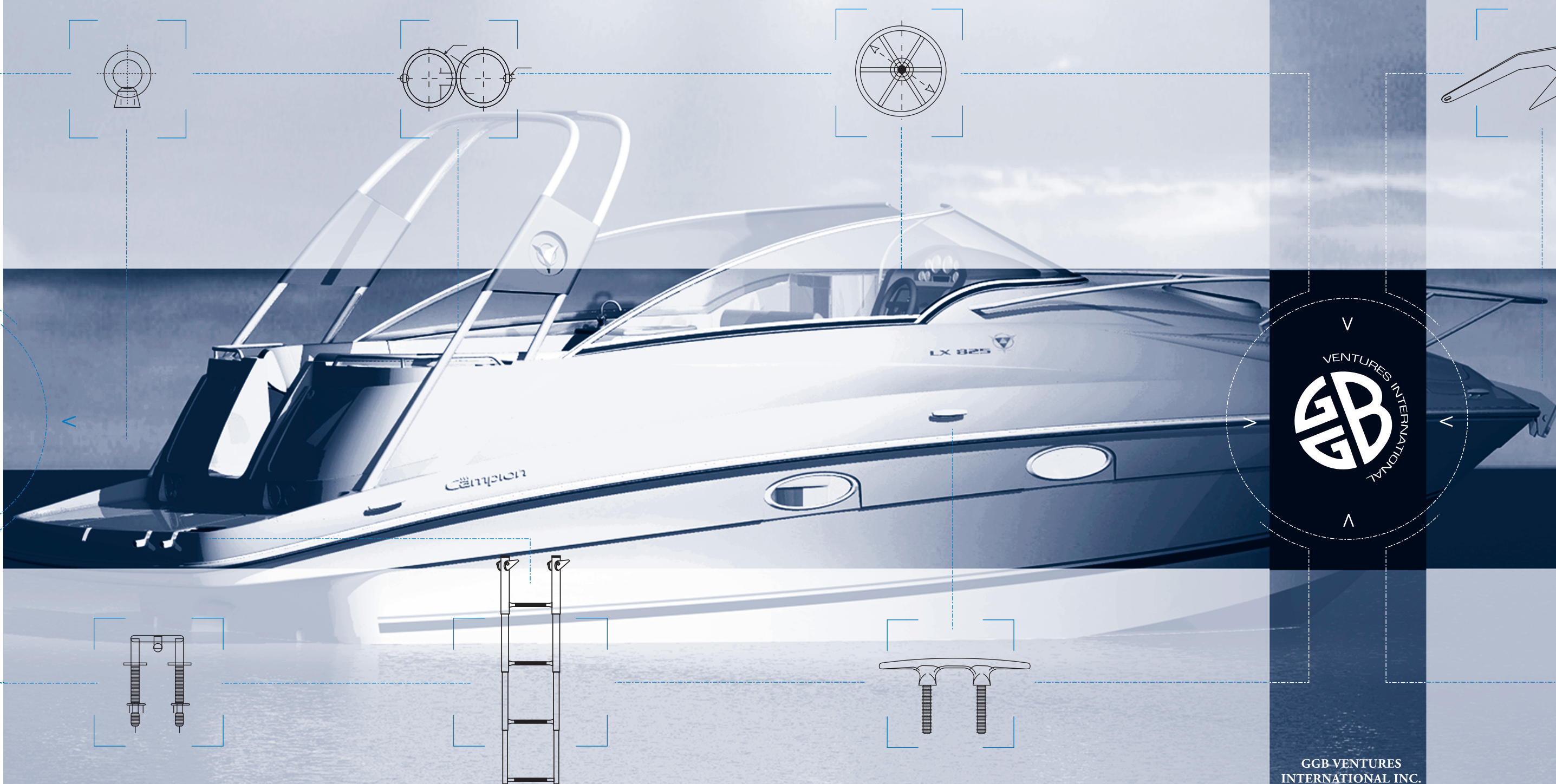
INTERNATIONAL IMPORTER / EXPORTER

31-910 ROWNTREE DAIRY ROAD, VAUGHAN, ONTARIO, CANADA, L4L 5W6

TOLL FREE: 1 866 761 1080 TOLL FAX: 866 761 1077 ggbventures.com

MARINE HARDWARE

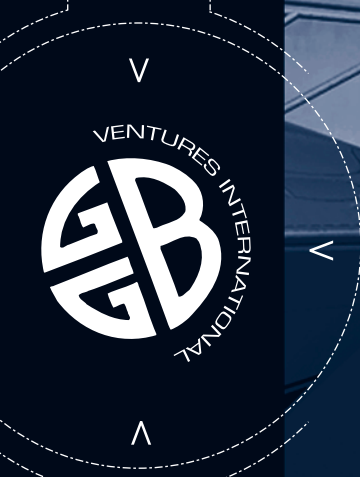
SPECIALIZING IN OEM QUALITY STAINLESS STEEL & CUSTOM MANUFACTURING



TOLL FREE 1.866.761.1080



www.ggbventures.com



GGB VENTURES INTERNATIONAL INC.

TABLE OF CONTENTS

Hawse Pipes	1
Rope & Deck Pipes	2
Chocks	2
Deck Cleats	3-5
Rings	6
Base Rail Fittings	6-8
Tee Rail Fittings	9
Hand Rail Fittings	10-11
Stanchions	11
Bow & Stern Eyes	12
Elbows & End Fittings	13
Deck Hardware	14
Over Platform Ladders	15-16
Top Hardware & Fittings	17-20
Heavy Duty Top Fittings	21
Hinges	22-23
Cabinet Hardware	24-25
Sailboat Hardware	26-27
Deck Fills	28-30
Gas Vents	31
Accessories & Misc. Hardware	32
Eye Nuts	33
Ski Tows	33-35
Drink Holders	34-35
Investment Cast Anchors	36-38
Euro – Style Hinges	39-42

GGB has more than 50 years of facilitating engineered components to customers throughout North America.

Our mandate is to work together with you, enhancing views and learning exactly how we can assist. Ultimately achieving **expected** production and supply, **ensuring** on-time delivery, **informing** via custom blanket order schedules, **protecting** with available contingent inventory, and **maintaining quality** expectations at the lowest possible price.

Whether it is standard deck hardware or custom manufactured stainless or aluminum, GGB is committed to servicing your needs.



HAWSE PIPES

HAWSE PIPE

P/N	FLANGE	INT. HOLE	DEPTH	FASTENER	WT. (g)
66223	5.5"x2.5" (140x64mm)	1.5"x3.75" (38x95mm)	.88" (22mm)	#10(4)	320



HAWSE PIPE

P/N	FLANGE	INT. HOLE	DEPTH	FASTENER	WT. (g)
66127	6.5"x3.3" (165x84mm)	4"x2" (102x51mm)	1.1" (28mm)	#10(4)	560



HAWSE PIPE

P/N	FLANGE	INT. HOLE	DEPTH	FASTENER	WT. (g)
66128	7"x4" (178x102mm)	4.5"x1.5" (114x38mm)	2.1" (53)	1/4"(4)	990



HAWSE PIPE

P/N	FLANGE	INT. HOLE	DEPTH	FASTENER	WT. (g)
66129	9.4"x5.5" (239x140mm)	7"x3" (178x76mm)	1" (25.4mm)	1/4"(4)	980



**TRIANGULAR
HAWSE PIPE**

P/N	INT. HOLE	DEPTH	FASTENER	WT. (g)
66349	4-3/4"x23/4" (121x70mm)	1-3/4" (44mm)	#10(3)	1,200



ROPE / DECK PIPE

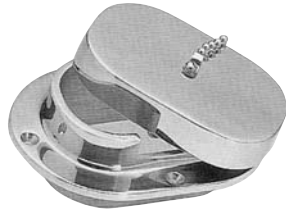
P/N	PIPE SIZE	HOLE REQ.	FASTENER	WT. (g)
66008	3.8"x2.5" (97x64mm)	4.1"x2.8" (104x71mm)	#10(4)	940



ROPE & DECK PIPES



ROPE & DECK PIPES



P/N	PIN SIZE	HOLE REQ.	FASTENER	WT. (g)
66095	3.8"x2.5" (97x64mm)	4.1"x2.8" (104x71mm)	#12(4)	1,050
66217	Replacement Cap & Chain Only			340

CHOCKS

SKENE BOW CHOCKS



P/N	UNIT	LENGTH	LINE SIZE	FASTENER	WT. (g)
66113	Pr.	4-1/2"(114mm)	1/2"(13mm)	#10(2)	220
66073	Pr.	6"(152mm)	3/4"(19mm)	1/4"(2)	570

SKENE BOW CHOCKS



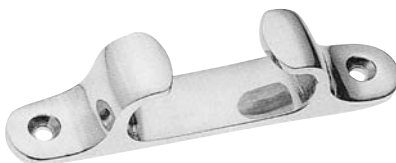
P/N	UNIT	LENGTH	WT. (g)
20712	Pr.	12"(305mm)	1960

BOW CHOCKS



P/N	UNIT	LENGTH	LINE SIZE	FASTENER	WT. (g)
66013	Pr.	4-1/2"(114mm)	1/2"(13mm)	#10(2)	220
66030	Pr.	6"(152mm)	3/4"(19mm)	1/4"(2)	450
66053	Lt.	9"(229mm)	1"(25mm)	3/8"(2)	860
66054	Rt.	9"(229mm)	1"(25mm)	3/8"(2)	860

STRAIGHT CHOCKS



P/N	UNIT	LENGTH	LINE SIZE	FASTENER	WT. (g)
66082	Ea.	5"(127mm)	5/8"(16mm)	#10(2)	170
66083	Ea.	6"(152mm)	3/4"(19mm)	1/4"(2)	230



DECK CLEATS

HOLLOW BASE CLEATS

P/N	LENGTH	HEIGHT	FASTENER	WT. (g)
20004	4"(101mm)	1"(25mm)	1/4"(4)	100
20005	5"(138mm)	1.1"(28mm)	1/4"(4)	160
66009	6"(152mm)	1.2"(30mm)	1/4"(4)	200
66010	8"(203mm)	1.4"(36mm)	1/4"(4)	320
66011	10"(254mm)	1.8"(46mm)	5/16"(4)	620
66012	12"(305mm)	2.1"(53mm)	5/16"(4)	1,020



HEAVY DUTY HOLLOW BASE CLEATS

P/N	LENGTH	HEIGHT	FASTENER	WT. (g)
66110	8"(203mm)	2.2"(56mm)	1/4"(4)	660
66111	10"(254mm)	2.4"(61mm)	5/16"(4)	1,110
66112	12"(305mm)	2.75"(70mm)	5/16"(4)	1,900
66224	15"(381mm)	3.88"(99mm)	1/2"(4)	2,900



STUD MOUNT CLEATS

P/N	LENGTH	WT. (g)
200N12	12"(305mm)	2,195



FOUR HOLE CLEATS

P/N	LENGTH	FASTENER	WT. (g)
20204	4"(102mm)	1/4"(4)	130
20205	5"(127mm)	1/4"(4)	250
20206	6"(152mm)	1/4"(4)	340
20208	8"(203mm)	1/4"(4)	500
20210	10"(254mm)	5/16"(4)	810
20212	12"(305mm)	5/16"(4)	1,780



LOW SILHOUETTE CLEATS

P/N	LENGTH	HEIGHT	FASTENER	WT. (g)
66206	6"(152mm)	1.2"(30mm)	#10 (4)	215
66207	8"(203mm)	1.8"(46mm)	1/4"(4)	490



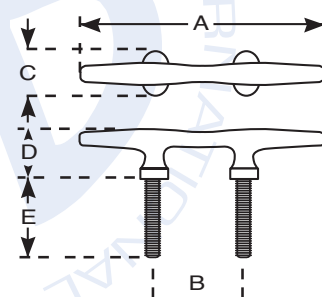
DECK CLEATS

GGB VENTURES INTERNATIONAL INC.

SS HERRESHOFF- STYLE STUD CLEATS

POLISHED 316SS STUD CLEATS c/w WASHERS & NUTS

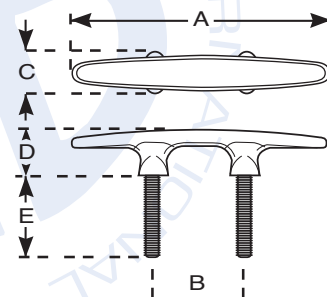
PART NUMBER	CLEAT SIZE (A)	STUD C/C (B)	WIDTH (C)	DECK-TOP HEIGHT (D)
GGB-M012-0133Y	4" (102mm)	1"(25mm)	1"(25mm)	1"(25mm)
GGB-M012-0132Y	6"(152mm)	2-5/16"(59mm)	1-1/2"(38mm)	1-1/4"(32mm)
GGB-M012-0141Y	8"(203mm)	2-7/8"(73mm)	2"(51mm)	1-1/2"(38mm)
DESCRIPTION	STUD LENGTH (E)	STUD SIZE	CARTON QTY	LOGO ABILITY
4" (102mm) Long	1-5/8"(41mm)	1/4" x 20	50	No
6" (152mm) Long	2"(51mm)	5/16" x 20	40	No
8" (203mm) Long	2"(51mm)	3/8" x 18	25	No



POLISHED 316SS STUD CLEATS c/w WASHERS & NUTS

SS EURO- STYLE STUD CLEATS

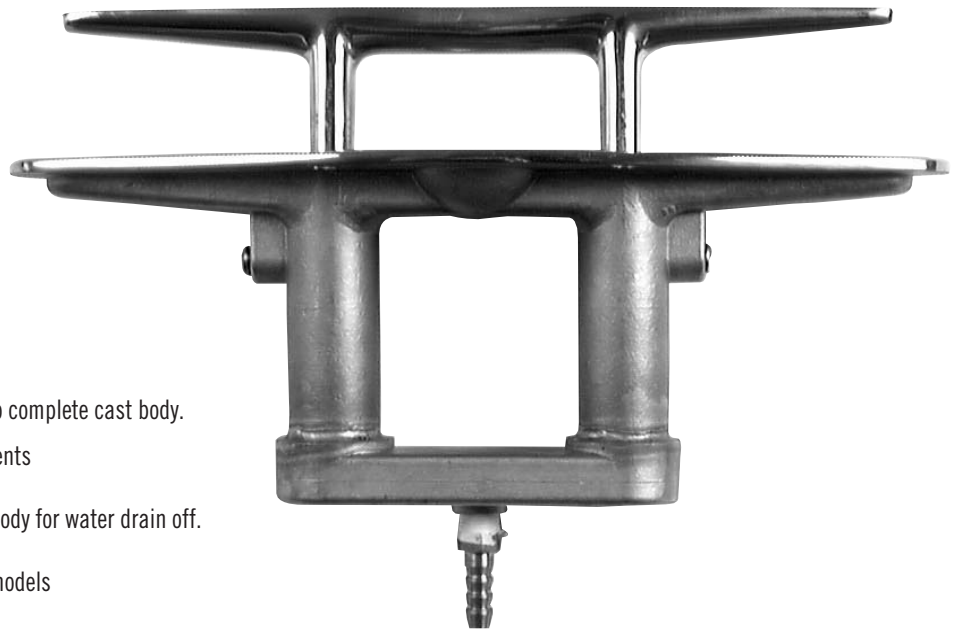
PART NUMBER	CLEAT SIZE (A)	STUD C/C (B)	WIDTH (C)	DECK-TOP HEIGHT (D)
GGB-M012-0130Y	6" (152mm)	2-1/4"(57mm)	7/8"(22mm)	1-3/16"(30mm)
GGB-M012-0134Y	8" (203mm)	2-13/16"(71mm)	7/8"(22mm)	1-3/8"(35mm)
GGB-M012-0135Y	10" (254mm)	3-1/2"(89mm)	1-1/8"(29mm)	1-13/16"(46mm)
GGB-M012-0137Y	12" (305mm)	4"(102mm)	1-1/8"(29mm)	2"(51mm)
DESCRIPTION	STUD LENGTH (E)	STUD SIZE	CARTON QTY	LOGO ABILITY
6" (152mm) Long	1-3/4"(44mm)	5/16" x 18	50	Yes
8" (203mm) Long	2-1/4"(57mm)	1/2" x 18	40	Yes
10" (254mm) Long	2-1/4"(57mm)	1/2" x 18	10	Yes
12" (305mm) Long	2-1/4"(57mm)	5/8" x 18	0	Yes



CLEAT

PULL UP FLUSH CLEATS - 316SS

PART NUMBER	CLEAT LENGTH	TOTAL LENGTH	HEIGHT	WIDTH	FASTENER/STUD	WEIGHT (g)
M012-001Y	4.5" (114mm)	5" (133mm)	2.8" (70mm)	1.9" (49mm)	#10 (4) 5/16" (4)	585
M012-0075Y	6" (152mm)	7" (175mm)	2.8" (70mm)	2.4" (60mm)	#10 (4) 5/16" (4)	820
M012-0079Y	8" (203mm)	9" (229mm)	2.8" (70mm)	2.8" (70mm)	#10 (4) 7/16" (4)	1240
M012-0086Y	10" (254mm)	11" (279mm)	2.8" (70mm)	3.4" (87mm)	#10 (4) 1/2" (4)	TBA



- Counter sunk or stud mount models
- 316SS Marine grade stainless steel
- Water Resistant - Cleat recesses into complete cast body. Captured by rubber seals and ball dents
- 3/8" Brass nipple supplied on cast body for water drain off.
- Similar hole pattern to competitive models
- No need for separate drain receptacle - complete ss cast body
- Adjustable tension with allen key
- Mounting plates order separate:
 4.5" = M012-0098Y
 6" = M012-0097Y
 8" = M012-0099Y
 10" = M012-0100Y



TO ORDER WITH 316SS STUDS AND NUTS ADD "S" TO END OF MODEL #



RINGS



LIFT RING / CLEAT COMBINATION



P/N	LENGTH	EYE DIA.	FASTENER	MAX.LD.(LB.)	WT. (g)
66098	6"(152mm)	1-1/8"(29mm)	#10 (2)	4000	410
66099	7"(178mm)	1-1/2"(38mm)	1/4"(2)	5000	930

ANGULAR LOADING. Due to the many variances that arise, no guarantee of actual performance is possible for angular loading, Published figures, herein, are for guide purposes only.

MAX. WORKING LOADS. These figures have been determined on the basis of the load being applied in the direction of the axis of the shank for each Eye listed. Bolt Size: 5/8-11.

LIFT RING WITH PLATE



P/N	LENGTH	EYE DIA.	FASTENER	MAX.LD.(LB.)	WT. (g)
66058	3-3/4"(95mm)	1-1/2"(38mm)	#10 (4)	3000	390
66059	Plate Only		#10 (4)		65

ANGULAR LOADING. Due to the many variances that arise, no guarantee of actual performance is possible for angular loading, Published figures, herein, are for guide purposes only.

MAX. WORKING LOADS. These figures have been determined on the basis of the load being applied in the direction of the axis of the shank for each Eye listed. Bolt Size: 5/8-11.

BOW EYE



P/N	LENGTH	EYE DIA.	FASTENER	MAX.LD.(LB.)	WT. (g)
66070	3"(76mm)	1-1/8"(29mm)	#10 (2)	3000	230
66343	2-3/8"(60mm)	1-1/8"(29mm)	#10 (2)		200

ANGULAR LOADING. Due to the many variances that arise, no guarantee of actual performance is possible for angular loading, Published figures, herein, are for guide purposes only.

MAX. WORKING LOADS. These figures have been determined on the basis of the load being applied in the direction of the axis of the shank for each Eye listed. Bolt Size: 5/8-11.

BASE RAIL FITTINGS

30 ° ROUND BASE



P/N	TUBE O.D	BASE	FASTENER	WT. (g)
66077	7/8"(22.2mm)	2.5"(64mm) O.D	#10 (3)	200
66177	1"(25.4mm)	2.8"(71mm) O.D	1/4"(3)	220

(With 1/4-28 Set Screws)

45 ° ROUND BASE



P/N	TUBE O.D	BASE	FASTENER	WT. (g)
66014	7/8"(22.2mm)	2.5"(64mm) O.D	#10 (3)	240
66114	1"(25.4mm)	2.8"(71mm) O.D	1/4"(3)	210

(With 1/4-28 Set Screws)

60 ° ROUND BASE



P/N	TUBE O.D	BASE	FASTENER	WT. (g)
66040	7/8"(22.2mm)	2.5"(64mm) O.D	#10 (3)	200
66140	1"(25.4mm)	2.8"(71mm) O.D	1/4"(3)	220

(With 1/4-28 Set Screws)



BASE RAIL FITTINGS

P/N	TUBE O.D	BASE	FASTENER	WT. (g)
66039	7/8"(22.2mm)	2.5"(64mm)	#10(3)	215
66139	1"(25.4mm)	2.8"(71mm)	1/4"(3)	230

(With 1/4-28 Set Screws)



**90°
ROUND BASE**

P/N	TUBE O.D	BASE	FASTENER	WT. (g)
66078	7/8"(22.2mm)	3"x1.7"(76x43mm)	#10(3)	200
66178	1"(25.4mm)	3.5"x1.9"(89x48mm)	1/4"(3)	230

(With 1/4-28 Set Screws)



**30° RECTANGULAR
BASE**

P/N	TUBE O.D	BASE	FASTENER	WT. (g)
66015	7/8"(22.2mm)	3"x1.7"(76x43mm)	#10(4)	210
66115	1"(25.4mm)	3.2"x1.9"(89x48mm)	1/4"(4)	240

(With 1/4-28 Set Screws)



**45° RECTANGULAR
BASE**

P/N	TUBE O.D	BASE	FASTENER	WT. (g)
66042	7/8"(22.2mm)	3"x1.7"(76x43mm)	#10(4)	210
66142	1"(25.4mm)	3.2"x1.8"(89x48mm)	1/4"(4)	240

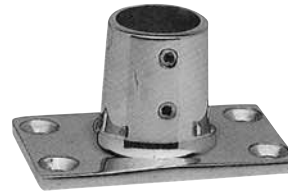
(With 1/4-28 Set Screws)



**60° RECTANGULAR
BASE**

P/N	TUBE O.D	BASE	FASTENER	WT. (g)
66041	7/8"(22.2mm)	2.8"x1.7"(71x43mm)	#10(4)	200
66141	1"(25.4mm)	3"x1.8"(76x46mm)	1/4"(4)	220

(With 1/4-28 Set Screws)



**90° RECTANGULAR
BASE**

P/N	TUBE O.D	BASE	HT.	FASTENER	WT. (g)
66116	1"(25.4mm)	3.8"x3.4"(97x86mm)	3"(76mm)	1/4"(4)	400

(With 1/4-28 Set Screws)



**HEAVY ADJ-90°
"VOLCANO" BASE**

P/N	TUBE O.D	BASE	HT.	FASTENER	WT. (g)
66182	7/8"(22.2mm)	2.7"x3.7"(69x94mm)	2.8"(71mm)	1/4"(4)	270
66183	1"(25.4mm)	2.7"x3.7"(69x94mm)	2.8"(71mm)	1/4"(4)	270

(With 1/4-28 Set Screws)

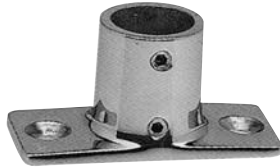


**60°
DELUXE BASE**

BASE RAIL FITTINGS



90° 2-HOLE RECTANGULAR BASE



P/N	TUBE O.D	BASE	HT.	FASTENER	WT. (g)
66194	7/8"(22.2mm)	1.2"x2.8"(30x71mm)	1.4"(36mm)	1/4"(2)	130
66195	1"(25.4mm)	1.3"x2.8"(33x71mm)	1.4"(36mm)	1/4"(2)	135

(With 1/4-28 Set Screws)

60° LOW ROUND BASE



P/N	TUBE O.D	BASE	HT.	FASTENER	WT. (g)
66068	7/8"(22.2mm)	2.6"(66mm)	.8"(20mm)	1/4"(3)	155
66168	1"(25.4mm)	2.8"(71mm)	.8"(20mm)	1/4"(3)	160

(With 1/4-28 Set Screws)

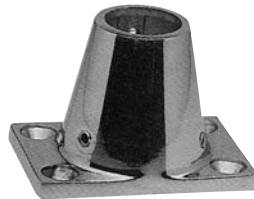
90° LOW ROUND BASE



P/N	TUBE O.D	BASE	HT.	FASTENER	WT. (g)
66071	7/8"(22.2mm)	2.6"(66mm)	.8"(20mm)	1/4"(3)	140
66072	1"(25.4mm)	2.8"(71mm)	.8"(20mm)	1/4"(3)	145

(With 1/4-28 Set Screws)

90° ADJ- "VOLCANO" BASE



P/N	TUBE O.D	BASE	HT.	FASTENER	WT. (g)
66196	1"(25.4mm)	3"x2"(76x51mm)	2"(51mm)	1/4"(4)	230

(With 1/4-28 Set Screws)

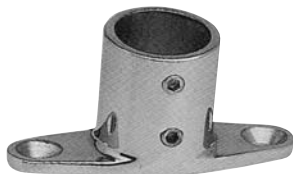
5 1/2° BLIND BASE



P/N	TUBE O.D	BASE	FASTENER	WT. (g)
66084	7/8"(22.2mm)	1.5"x2.2"(38x56mm)	1/4"(2)	130
66184	1"(25.4mm)	1.5"x2.2"(38x56mm)	1/4"(2)	150

(With 1/4-28 Set Screws)

83° 2-HOLE BASE



P/N	TUBE O.D	BASE	HT.	FASTENER	WT. (g)
66148	1"(25.4mm)	1.2"x3.1"(30x79mm)	1.5"(38mm)	#10 (2)	110

(With 1/4-28 Set Screws)



TEE RAIL FITTINGS

P/N	TUBE O.D.	WT. (g)
66093	7/8"(22.2mm)	170
66193	1"(25.4mm)	200

(With 1/4-28 Set Screws)



**60°
UNIVERSAL TEE**

P/N	TUBE O.D.	USE	WT. (g)
66044	7/8"(22.2mm)	Lt.	170
66045	7/8"(22.2mm)	Rt.	170
66144	1"(25.4mm)	Lt.	200
66145	1"(25.4mm)	Rt.	200

(With 1/4-28 Set Screws)



TEE 60°

P/N	TUBE O.D.	WT. (g)
66043	7/8"(22.2mm)	150
66143	1"(25.4mm)	180

(With 1/4-28 Set Screws)



TEE 90°

P/N	TUBE O.D.	USE	WT. (g)
66037	7/8"(22.2mm)	Lt.	160
66038	7/8"(22.2mm)	Rt.	160
66137	1"(25.4mm)	Lt.	140
66138	1"(25.4mm)	Rt.	140

(Drilled & Counter-Bored)



TEE 60°

P/N	TUBE O.D.	WT. (g)
66036	7/8"(22.2mm)	150
66136	1"(25.4mm)	180

(Drilled & Counter-Bored)



TEE 90°

P/N	TUBE O.D.	EYE I.D.	WT. (g)
66370	7/8"(22.2mm)	.340	340



**LONG
TEE 90°**

P/N	TUBE O.D.	EYE I.D.	WT. (g)
66020	7/8"(22.2mm)	.38"(10mm)	200
66120	1"(25.4mm)	.38"(10mm)	205

(With 1/4-28 Set Screws)



**60° TEE
-CABLE ANCHOR**

P/N	TUBE O.D.	EYE I.D.	WT. (g)
66019	7/8"(22.2mm)	.38"(10mm)	210
66119	1"(25.4mm)	.38"(10mm)	210

(With 1/4-28 Set Screws)



**90° TEE
-CABLE ANCHOR**

HAND RAIL FITTINGS



END-TOP MOUNTED 90°



P/N	TUBE O.D	DESC.	HEIGHT	WT. (g)
66130	1"(25.4mm)	End	1-1/4"(38mm)	410
66130-1	7/8"(22.2mm)	End	1-1/4"(38mm)	930

(With 1/4-28 Set Screws)

END-BOTTOM MOUNTED 90°



P/N	TUBE O.D	DESC.	HEIGHT	WT. (g)
66090	7/8"(22.2mm)	End	1-1/2"(38mm)	430
66190	1"(25.4mm)	End	1-1/2"(38mm)	560

(With 1/4-28 Set Screws)

CENTER STANCHION



P/N	TUBE O.D	DESC.	HEIGHT	WT. (g)
66091	7/8"(22.2mm)	Ctr.	1-1/2"(38mm)	135
66191	1"(25.4mm)	Ctr.	1-1/2"(38mm)	150

(With 1/4-28 Set Screws)

END 120° STANCHION



P/N	TUBE O.D	DESC.	HEIGHT	FASTENER	WT. (g)
66080	7/8"(22.2mm)	120°	1-1/2"(38mm)	#10(2)	120
66180	1"(25.4mm)	120°	1-3/4"(44mm)	#10(2)	150

CENTER 60° STANCHION



P/N	TUBE O.D	DESC.	HEIGHT	FASTENER	WT. (g)
66079	7/8"(22.2mm)	Ctr.	1-1/2"(38mm)	#10(2)	100
66179	1"(25.4mm)	Ctr.	1-3/4"(44mm)	#10(2)	170
66215	7/8"(22.2mm)	Ctr. (Lt.)	1-1/2"(38mm)	#10(2)	100
66216	7/8"(22.2mm)	Ctr. (Rt.)	1-1/2"(38mm)	#10(2)	100

AFT 60° STANCHION



P/N	TUBE O.D	DESC.	HEIGHT	FASTENER	WT. (g)
66081	7/8"(22.2mm)	60°	1-1/2"(38mm)	#10(2)	120
66181	1"(25.4mm)	60°	1-3/4"(44mm)	#10(2)	150
66225	7/8"(22.2mm)	60°	1-1/2"(38mm) (Lt.)	#10(2)	120
66226	7/8"(22.2mm)	60°	1-1/2"(38mm) (Rt.)	#10(2)	120

STANCHION END 90°



P/N	TUBE O.D	DESC.	HEIGHT	FASTENER	WT. (g)
66149	1"(25.4mm)	End	1-3/4"(44mm)	#10(3)	140



HAND RAIL FITTINGS

YP/N	TUBE O.D.	DESC.	HEIGHT	FASTENER	WT. (g)
66351	7/8"(22.2mm)	End	2-9/16"(65mm)	#10(2)	180

END 60° STANCHION



P/N	TUBE O.D.	DESC.	HEIGHT	FASTENER	WT. (g)
66352	7/8"(22.2mm)	Ctr.	2-9/16"(65mm)	#10(2)	140

CENTER 60° STANCHION



P/N	TUBE SIZE	LENGTH	WT. (g)
66229	7/8"(22.2mm)	7/8"(22.2mm)	40

BULLET END



STANCHIONS

P/N	TUBE O.D.	LENGTH	FASTENER	WT. (g)
66062	7/8"(22.2mm)	4"(102mm)	#10(2)	180
66063	7/8"(22.2mm)	5"(127mm)	#10(2)	230
66064	7/8"(22.2mm)	6"(152mm)	#10(2)	230

BOW STANCHION

(With 1/4-28 Set Screws)



P/N	TUBE O.D.	LENGTH	FASTENER	WT. (g)
66065	7/8"(22.2mm)	4"(102mm)	#10(2)	190
66066	7/8"(22.2mm)	5"(127mm)	#10(2)	230
66067	7/8"(22.2mm)	6"(152mm)	#10(2)	260

STERN STANCHION



"NEW" BOW & STERN EYES

GGB VENTURES INTERNATIONAL INC.

304 STAINLESS STEEL

MACHINED AISI

P/N	A	B	C	D	E	Weight	Pack
22012177	3/8"	3"	1-1/8"	4-1/2"	1-7/16"	157g	20
22012152	7/16"	3-1/2"	1-3/8"	5-5/16"	1-7/8"	342g	10
22012126	1/2"	4"	1-3/8"	6"	1-7/8"	342g	10



GGB Marine Bow and Stern eyes come with adjustable finished nuts. The shafts have rolled threads. All parts are made of Stainless steel.

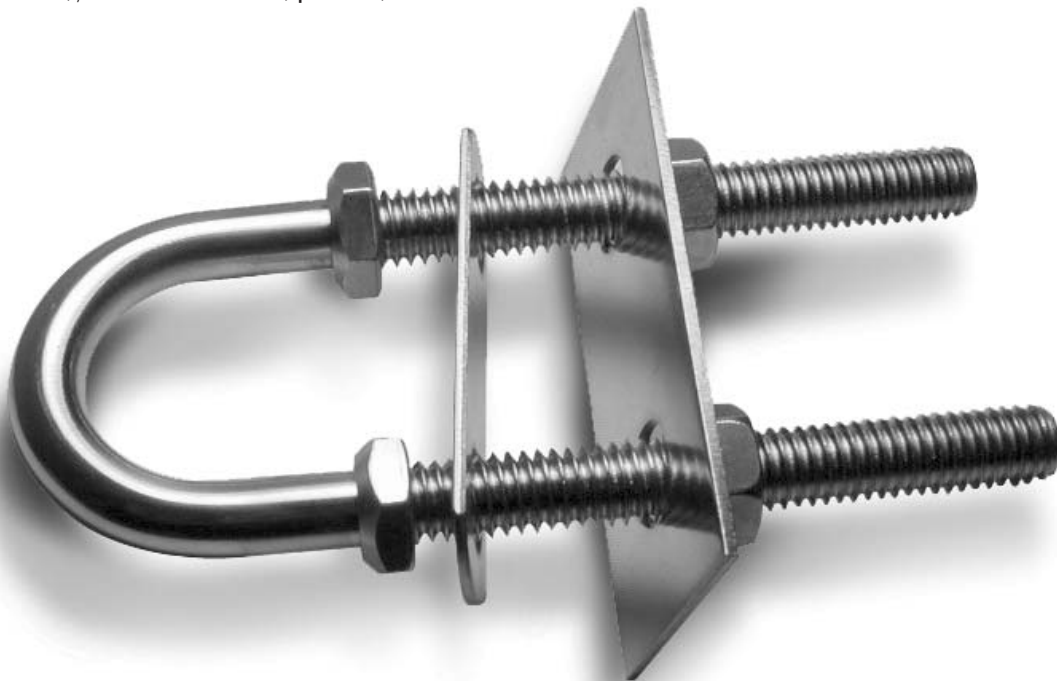
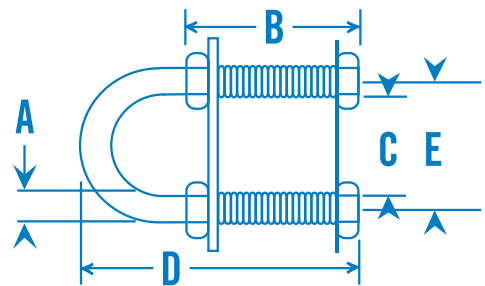
Plates Sizes:

22012177

2-1/4" x 3/4" (plate 1), 2-3/4" x 1-1/4" (Plate 2)

22012126

3" x 3/4" (plate 1), 3-1/2" x 1-1/4" (plate 2)





ELBOWS

BOW FORMS

P/N	TUBE O.D.	DEGREE	WT. (g)
66051	7/8"(22.2mm)	110°	280
66086	7/8"(22.2mm)	125°	300
66185	7/8"(22.2mm)	140°	240
66187	1"(25.4mm)	140°	310
66151	1"(25.4mm)	110°	350
66186	1"(25.4mm)	125°	330



(With 1/4-28 Set Screws)

ELBOW 90°

P/N	TUBE O.D.	WT. (g)
66076	7/8"(22.2mm)	130
66176	1"(25.4mm)	160

(With 1/4-28 Set Screws)



3-WAY CORNER FITTING

P/N	TUBE O.D.	WT. (g)
66046	7/8"(22.2mm)	190
66146	1"(25.4mm)	245



(With 1/4-28 Set Screws)

END FITTINGS

HAWSE PIPE

P/N	TUBE O.D.	WT. (g)
66049	7/8"(22.2mm)	#10(2) 200

(With 1/4-28 Set Screws)



RAIL END 5 1/2° (END-IN)

P/N	TUBE O.D.	WALK THK.	FASTENER	WT. (g)
66349	4-3/4"x23/4" (121x70mm) (44mm)	1-3/4"	#10(3)	1,200



RAIL END 5 1/2° (END-OUT)

P/N	TUBE O.D.	WALK THK.	FASTENER	WT. (g)
66008	3.8"x2.5" (97x64mm)	4.1"x2.8" (104x71mm)	#10(4)	940



DECK HARDWARE



LIGHT POLE BASE



P/N	POLE	FASTENER	WT. (g)
66085	3/4"(19mm)	#10	170

FLAG POLE SOCKET TOP MOUNTED



P/N	TUBE O.D	BASE	HT.	FASTENER	WT. (g)
66147	1"(25.4mm)	2.7"(68mm)	1.9"(48mm)	#10(3)	220
66149	1-1/4"(32mm)	2.7"(68mm)	2.1"(53mm)	#10(3)	280

(With 1/4-28 Set Screws)

FLAG POLE SOCKET FLUSH MOUNTED



P/N	TUBE O.D	BASE	DEPTH	FASTENER	WT. (g)
66170	1-1/4"(31.8mm)	2.8"(71mm)	2.2"(56mm)	#12(3)	270

ROD HOLDER FLUSH MOUNT STAINLESS STEEL



P/N	LENGTH	INSIDE DIA.	WT. (g)
40017	8-5/8"(219mm)	1-5/8"(41mm)	800

Construction with full length rubber liner.
Black or white.

ROD HOLDER W / BLK CAP



P/N	LENGTH	INSIDE DIA.	WT. (g)
40017.BLC	8-5/8"(219mm)	1-5/8"(41mm)	800

Construction with removable Black Rubber Insert & Cap.

ANTENNA BASE



P/N	BASE SIZE	HEIGHT	WT. (g)
66230A	3-3/4"x213/64" (95x56mm)	6"(152mm)	950
66230	2-1/2"x35/8" (64x92mm)	4-3/4"(108mm)	600

(With 1/4-28 Set Screws)

ANTENNA RAIL MOUNT



P/N	THREAD	WT. (g)
M026-0033Y	1"(25.4mm)	560

OVER PLATFORM LADDERS

SS POCKET MOUNT TELESCOPING LADDER

Polished 304SS Pocket Mount 3-Step Telescoping Ladder c/w HD 6" Gudgeons + 4" Slides.
Ladders are equipped with Nylon Treads and Nylon Sleeves (for noise dampening).



PART NUMBER	LENGTH DEPLOYED	LENGTH STOWED	HEIGHT STOWED	OVERALL WIDTH
GGB-3205.OPS3	34-1/2"(876mm)	14-1/2"(368mm)	2-1/5"(56mm)	11-7/8" (302mm)



SS OVER PLATFORM TELESCOPING LADDER

Polished 304SS Over Platform 2-Step Telescoping Ladder c/w HD 6" Gudgeons.
Ladders are equipped with Nylon Treads and Nylon Sleeves (for noise dampening).



PART NUMBER	LENGTH DEPLOYED	LENGTH STOWED	HEIGHT STOWED	OVERALL WIDTH
GGB-3205.OV2	23-1/2"(597mm)	13-1/4"(337mm)	1-1/2"(38mm)	11-1/2" (292mm)



SS OVER PLATFORM TELESCOPING LADDER

Polished 304SS Over Platform 3-Step Telescoping Ladder c/w HD 7" Gudgeons.
Ladders are equipped with Nylon Treads and Nylon Sleeves (for noise dampening).



PART NUMBER	LENGTH DEPLOYED	LENGTH STOWED	HEIGHT STOWED	OVERALL WIDTH
GGB-3205.OV3	34-7/8"(876mm)	15"(381mm)	1-3/5"(41mm)	11-3/5" (295mm)



SS OVER PLATFORM TELESCOPING LADDER

Polished 304SS Over Platform 4-Step Telescoping Ladder c/w HD 7" Gudgeons.
Ladders are equipped with Nylon Treads and Nylon Sleeves (for noise dampening).



PART NUMBER	LENGTH DEPLOYED	LENGTH STOWED	HEIGHT STOWED	OVERALL WIDTH
GGB-3205.OV4	45-1/2"(1156mm)	15-1/2"(394mm)	2"(51mm)	12" (305mm)

OVER PLATFORM LADDERS

cont'd

SS POCKET MOUNT TELESCOPING LADDER

Polished 304SS Over Platform 4-Step Telescoping Ladder c/w HD 7" Gudgeons.
Ladders are equipped with Nylon Treads and Nylon Sleeves (for noise dampening).



PART NUMBER	LENGTH DEPLOYED	LENGTH STOWED	HEIGHT STOWED	OVERALL WIDTH
GGB-3205.OV4	45-1/2"(1156mm)	15-1/2"(394mm)	2"(51mm)	12" (305mm)



SS OVER PLATFORM TELESCOPING LADDER W/ GRIP HANDLE

Polished 304SS Over Platform 3-Step Telescoping Ladder c/w HD 7" Gudgeons and grip handle.
Ladders are equipped with Nylon Treads and Nylon Sleeves (for noise dampening).



PART NUMBER	LENGTH DEPLOYED	LENGTH STOWED	HEIGHT STOWED	OVERALL WIDTH
GGB-3205.OV3WH	34-7/8"(876mm)	15"(381mm)	1-3/5"(41mm)	11-3/5" (295mm)





"NEW" TOP HARDWARE

ROUND HEADER SIDE MOUNT

316 S/S INVESTMENT CAST

P/N	BASE SIZE	WINDSHIELD FRAME	PIN SIZE	FASTENER	WT(G)
M049-0261Y	2-3/8" x .82"	Fits up to .60" width"	1/4"-20	#10 (2)	86g
M049-0315Y	2-3/8" x .82"	90° Angle	1/4"-20	#10 (2)	86g

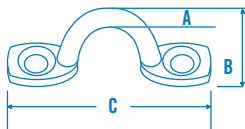
GGB Marine Round Header Side Mount is designed to be used as an alternate to our standard side mount deck hinge. Also can be used as a mounting bracket to windshield for Mirror's etc.



EYE STRAP - PAD EYE

FORMED 316 S/S

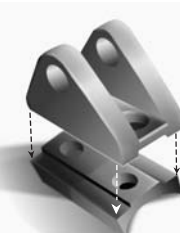
P/N	A	B	C	Fastener	Wt(g)
MH-5	0.20"	0.67"	1.98"	#8 (2)	8g
MH-5T	0.20"	0.67"	1.98"	#10(2)	8g



DECK HINGE W/ REMOVABLE CONCAVE BASE

316 S/S INVESTMENT CAST

P/N	Base Size	Pin Size	Fastener	Wt(g)
65312 Deck Hinge	.83 x 1.60"	1/4"-20	#10 (2)	77g
65329 Concave Adapter	.83 x 1.60"	N/A	#10 (2)	27g
65313 Deck Hinge Concave	.83 x 1.60"	1/4"-20	#10 (2)	80g



DECK HINGE / SIDE MOUNT THUMB SCREWS

304SS THREAD W/ NYLON OVAL TOP

P/N	Colour	Pin Size	Wt(g)
66BSC.25	Black Top	1/4"-20	10g
66WSC.25	White Top	1/4"-20	10g





SS DOUBLE SET SCREW OUTSIDE EYE END ("TOP CAP")

P/N	TUBE SIZE	INSIDE DIAMETER	PIN SIZE	WT. (g)
GGB-M021-0031Y	7/8"(22mm)	7/8"(22mm)	1/4"(6.3mm)	96 grams
GGB-M021-0033Y	1" (25mm)	1" (25mm)	1/4"(6.3mm)	116 grams



- Investment Cast Polished 316SS.
Dual set screw design provides for increased holding power.
- 1/4"-28 Set Screws

SS DOUBLE SET SCREW JAW SLIDE

P/N	TUBE SIZE	INSIDE DIAMETER	PIN-BOLT SIZE	WT. (g)
GGB-M021-0030Y	7/8"(22mm)	7/8"(22mm)	1/4"-20 (6.3x20mm)	100 Grams
GGB-M021-0032Y	1" (25mm)	1" (25mm)	1/4"-20 (6.3x20mm)	130 Grams



- Investment Cast Polished 316SS.
Dual set screw design provides for increased holding power.
- 1/4"-28 Set Screws

SS WIDE RAILING DECK HINGE

P/N	TUBE SIZE	PIN-BOLT SIZE	OVERALL WIDTH	OVERALL LENGTH
GGB-H0609	1-1/2"(38mm)	1/4"-20 (6.3x20mm)	1-1/2"(38mm)	2"(51mm)
GGB-H0609NB	1-1/2"(38mm)	1/4"-20 (6.3x20mm)	1-1/2"(38mm)	2"(51mm)



- Investment Cast Polished 316SS.

SS UNIVERSAL DECK HINGE

P/N	OVERALL LENGTH	OVERALL HEIGHT	FLANGE HEIGHT	PIN SIZE-BOLT
GGB-H1890	2-3/4" (70mm)	1-7/8" (48mm)	1"(25mm)	1/4"-20 (6.3x20mm)



- Investment cast Polished 316SS.
Vertical or Horizontal mounting capabilities.



P/N	TUBE SIZE	PIN SIZE	WT. (g)
66107	3/4"(19mm)O.D.	1/4"(6.3mm)	60

TOP INSERT



P/N	TUBE SIZE	PIN SIZE	WT. (g)
66101	7/8"(22.2mm)	1/4"(6.3mm)	100
66103	1"(25.4mm)	1/4"(6.3mm)	110
(With 1/4-28 Set Screws)			
M020-0044Y	3/4"(19.05mm)	1/4"(6.3mm)	90
M020-0046Y	30mm	1/4"(6.3mm)	125

TOP CAP



P/N	TUBE SIZE	PIN SIZE	WT. (g)
66106	3/4"(19mm)	1/4"-20(6.3mm-20)	70
66100	7/8"(22.2mm)	1/4"-20(6.3mm-20)	100
66102	1"(25.4mm)	1/4"-20(6.3mm-20)	110
M020-0045Y	30mm	1/4"(6.3mm)	135

TOP SLIDE WITH BOLT



P/N	BASE SIZE	PIN SIZE	FASTENER	WT. (g)
66104	.88"x2" (22x51mm)	1/4"-20 (6.3x20mm)	#10(2)	100

90° DECK HINGE



P/N	TUBE SIZE	PIN SIZE	WT. (g)
66107N	7/8" (22.2mm)	1/4" (6.3mm)	60
66107M	1" (25.4mm)	1/4" (6.3mm)	84

TOP INSERT (EYE END) -316SS



P/N	TUBE SIZE	PIN SIZE	WT. (g)
M020-0082Y	1-1/4" (31.7mm)	1/4" (6.3mm)	216

TOP CAP (EYE END) -316SS



P/N	TUBE SIZE	PIN SIZE	WT. (g)
M020-0081Y	1-1/4" (31.7mm)	1/4"-20(6.3mm)	168

TOP SIDE W/BOLT (JAWSLIDE) -316SS



TOP FITTINGS



**DECK HINGE
REMOVABLE
PIN**



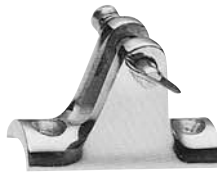
P/N	BASE SIZE	PIN SIZE	FASTENER	WT. (g)
66220	.88"x2" (22x51mm)	1/4"-20 (6.3-20mm)	#10(2)	90
66220NP	.88"x2"	No Pin	#10(2)	90

**DECK HINGE
CONCAVE
BASE**



P/N	BASE SIZE	PIN SIZE	FASTENER	WT. (g)
66221	.88"x2" (22x51mm)	1/4"-20 (6.3-20mm)	#10(2)	80

**DECK HINGE
REMOVABLE PIN
CONCAVE BASE**



P/N	BASE SIZE	PIN SIZE	FASTENER	WT. (g)
66200	.88"x2" (22x51mm)	1/4"-20 (6.3-20mm)	#10(2)	90
66220NP	.88"x2"	No Pin	#10(2)	90

**DECK HINGE
ANGLE
BASE**



P/N	BASE SIZE	PIN SIZE	FASTENER	WT. (g)
66222	.88"x2" (22x51mm)	1/4"-20 (6.3-20mm)	#10(2)	90
66383-N	.88"x2"	No Pin	#10(2)	90

**DECK HINGE
SIDE MOUNTED**



P/N	BASE SIZE	PIN SIZE	FASTENER	WT. (g)
66109	.88"x2" (22x51mm)	1/4"-20 (6.3-20mm)	#10(2)	70
66109-NB	.88"x2"	No Bolt	#10(2)	70

PAD EYE



P/N	EYE DIA.	FASTENER	WT. (g)
66105	3/8"(10mm)	#12(2)	15

HEAVY DUTY TOP FITTINGS

**HEAVY DUTY
TOP CAP**



P/N	TUBE O.D.	WT. (g)
66159	1"(25.4mm)	110
66157	7/8"(22.2mm)	

(With 1/4-28 Set Screws)



HEAVY DUTY TOP FITTINGS

P/N	TUBE O.D.	PIN SIZE	WT. (g)
66158	1"(25.4mm)	5/16"-18(8mm)	170
66156	7/8"(22.2mm)	5/16"-18(8mm)	

(With 1/4-28 Set Screws)



**HEAVY DUTY
TOP SLIDE
WITH BOLT**

P/N	BASE SIZE	PIN SIZE	FASTENER	WT. (g)
66108	1"x2.1" (25.4x53mm)	5/16"-18 (8mm)	1/4"(2)	100



**HEAVY DUTY
DECK HINGE
WITH BOLT**

P/N	BASE SIZE	PIN SIZE	FASTENER	WT. (g)
66213	1.9"x2.8" (48x71mm)	5/16"-18 (8mm)	1/4"(4)	130
66213-1/4	1.9"x2.8"	1/4"	1/4"(4)	130



**HEAVY DUTY
DECK HINGE
PLATE**

P/N	TUBE O.D.	PIN SIZE	WT. (g)
66155	1"(25.4mm)	5/16"-18 (8mm)	280

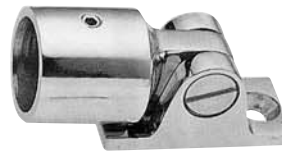
(With 1/4-28 Set Screws)



**HEAVY DUTY
TOP SLIDE
& TOP CAP
ASSEMBLY**

P/N	TUBE O.D.	BASE SIZE	PIN SIZE	FASTENER	WT. (g)
66154	1"(25.4mm) (25.4x53mm)	1"x2.1" (8mm)	5/16"-18	1/4"(2)	200

(With 1/4-28 Set Screws)



**HEAVY DUTY
DECK HINGE
& TOP CAP
ASSEMBLY**

P/N	TUBE O.D.	BASE SIZE	PIN SIZE	FASTENER	WT. (g)
66214	1"(25.4mm)	1.9"x2.8" (48x71mm)	5/16"-18 (8mm)	1/4"(4)	240

(With 1/4-28 Set Screws)



**HEAVY DUTY
DECK HINGE
PLATE
& TOP CAP
ASSEMBLY**

P/N	TUBE SIZE	WT. (g)
0322B	7/8"(22.2mm)	125
0321B	1"(25.4mm)	135

(With 1/4-28 Set Screws)



**HEAVY DUTY
TOP CAP**

P/N	TUBE SIZE	WT. (g)
0322A	7/8"(22.2mm)	150
0321A	1"(25.4mm)	160



**HEAVY DUTY
TOP SIDE**

HINGES



STRAP HINGE



(W/Removable Screw)

P/N	SIZE	FASTENER	WT. (g)
66025	4"x1" (102x25.4mm)	#10(4)	70
66026	6"x1-1/8" (152x29mm)	#10(6)	105
66204	6"x1-1/8" (152x29mm)	#10(6)	70

BUTT HINGE



P/N	SIZE	FASTENER	WT. (g)
66163	1-1/2"x1-1/2" (38x38mm)	#10(4)	50
66164	2"x2" (51x51mm)	#10(4)	80

DOOR HINGE



P/N	SIZE	FASTENER	WT. (g)
66028	1-1/2"x3" (38x76mm)	#8(6)	80
66029	1-1/2"x4" (38x102mm)	#10(6)	100

OFFSET HINGE



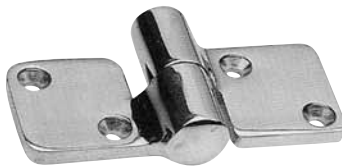
P/N	OFFSET	SIZE	FASTENER	"A"	WT. (g)
66161	3/8"(10mm)	1-1/2"x2-1/4" (38x57mm)	#8(5)	.75"(19mm)	65
66162	3/8"(10mm)	1-1/2"x2-3/4" (38x70mm)	#10(5)	.75"(19mm)	85

DOOR HINGE



P/N	SIZE	FASTENER	"A"	WT. (g)
66007	1-1/2"x2-1/4" (38x57mm)	#10(5)	.75"(19mm)	60
66021	1-1/2"x3" (38x76mm)	#10(5)	.75"(19mm)	80

TAKE-APART HINGE



P/N	SIZE	FASTENER	WT. (g)
66024	2"x3-3/4" (51x95mm)	#10(4)	170

T-STRAP HINGE



P/N	SIZE	FASTENER	WT. (g)
66384	3-7/8"x7-3/4" (98x197mm)	#1-2(8)	340



HINGES

**TAKE APART MOTOR
BOX HINGE (LOCKING)**

P/N	SIZE	FASTENER	WT. (g)
66018	1-1/2"x3-1/2" (38x89mm)	#10(4)	100



**HATCH HINGE
STANDARD**

P/N	SIZE	FASTENER	UNIT	WT. (g)
66027	3"x2-1/2" (76x64mm)	#10(8)	Ea.	220



**HATCH HINGE
ANGLE BASE**

P/N	SIZE	FASTENER	UNIT	WT. (g)
66211	3"x2-1/2" (76x64mm)	#10(8)	Ea.	210



**LADDER
HINGE**

P/N	TUBE SIZE	TYPE	UNIT	WT. (g)
66052	7/8" O.D. (22.2mm)	Lock	Ea.	350
66069	7/8" O.D. (22.2mm)	Pivot	Ea.	320



LADDER BRACKET

P/N	SIZE	TUBE SIZE	FASTENER	WT. (g)
66005 (Left)	2-5/8"x7/8"x1-3/4" (67x22.2x44mm)	7/8" O.D. (22.2mm)	#10(2)	110
66006 (Right)	2-5/8"x7/8"x1-3/4" (67x22.2x44mm)	7/8" O.D. (22.2mm)	#10(2)	110



GATE RAIL HINGE

P/N	RAIL SIZE	UNIT	WT. (g)
66056	1"x2-5/8" (25.4x67mm)	Ea.	1200

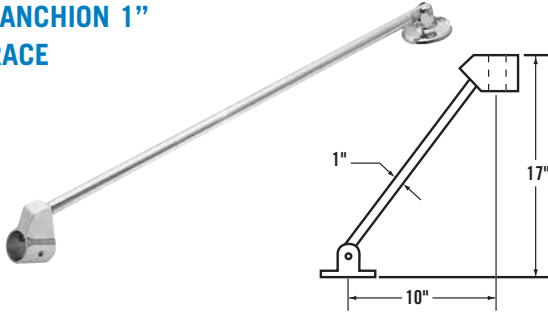


GATE RAIL LATCH

P/N	RAIL SIZE	UNIT	WT. (g)
66055	1"x2-5/8" (25.4x67mm)	Ea.	870



STANCHION 1" BRACE



P/N	TUBE SIZE	VERT. HT.	HORIZ. DIM.	WT. (g)
66175	1"(25.4mm)	17"(432mm)	10"(254mm)	660

LIFT RING



P/N	SIZE	FASTENER	WT. (g)
66022	1.5"x1.9" (38x48mm)	#8(4)	45

LIFT RING



P/N	SIZE	FASTENER	WT. (g)
26700	2.3"x2.5" (58x64mm)	#8(4)	110

LIFT RING



P/N	SIZE	FASTENER	WT. (g)
26901	1.8"x2.5" (46x64mm)	#8(4)	80

SKI RING



P/N	LENGTH	EYE DIA.	MAX. LD. (LB.)	WT. (g)
66218	5-1/12"(140mm)	3-1/4"(82.6mm)	L600	600

BASE-SKI RING



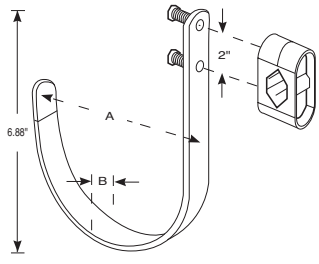
P/N	BASE	FASTENER	WT. (g)
66219	1.8"x3" (46x76mm)	#10(2)	65



SS RING BUOY BRACKETS

POLISHED 304SS RING BUOY BRACKETS

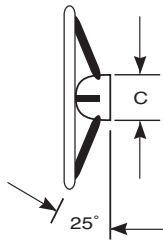
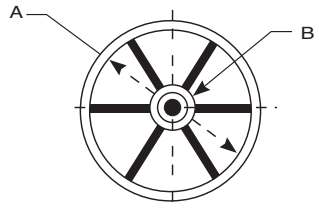
PART NUMBER	OVERALL LENGTH (A)	WIDTH (B)	FASTENER TYPE	NYLON RAIL BRACKET
GGB-3228	5" (127mm)	3/4" (19mm)	1/4" FH (6mm)	No
GGB-3229AB	5" (127mm)	3/4" (19mm)	1/4" FH (6mm)	Yes



SS STEERING WHEEL

POLISHED 304SS 6-SPOKE STEERING WHEEL @ 25°

PART NUMBER	OUTSIDE WHEEL DIAMETER (A)	HUB DIAMETER (B)	CENTER CAP DIAMETER (C)	CENTER CAP
GGB-630215	15-1/2" (394mm)	3/4" (19mm)	3-1/2" (89mm)	Teak or Black
GGB-630218	18" (457mm)	3/4" (19mm)	3-1/2" (89mm)	Teak or Black



w/grip handle – available upon request

LIFT RING

CONCEALED 90° LIFT RING - 304SS

PART NUMBER	LENGTH	HEIGHT	WIDTH	WEIGHT (g)
C099-0321Y	3" (76mm)	1" (25mm)	5/8" (16mm)	40



STANCHION EYE



P/N	TUBE O.D.	WALL THK.	EYE DIA.	WT. (g)
66118	1"(25.4mm)	.065"(11.6mm)	1/2"(13mm)	70

STANCHION SLEEVE W/EYE



P/N	TUBE O.D.	WALL THK.	WT. (g)
66121	7/8"(22.2mm)	5/16"(8mm)	70
66122	1"(25.4mm)	5/16"(8mm)	75

(With 1/4-28 Set Screws)

STANCHION CAP



P/N	TUBE O.D.	HOLE DIA	WT. (g)
66088	7/8"(22.2mm)	1/4"(6.3mm)	110
66188	1"(25.4mm)	1/4"(6.3mm)	125

(With 1/4-28 Set Screws)

STANCHION CAP WITH EYE



P/N	TUBE O.D.	EYE DIA	WT. (g)
66117	1"(25.4mm)	1/2"(13mm)	90

(With 1/4-28 Set Screws)

4° RECTANGULAR BASE



P/N	TUBE O.D.	BASE	FASTENER	WT. (g)
66135	1"(25.4mm)	3.5x.065"(89x76mm)	1/4"(4) (6.3mm)	490

(With 1/4-28 Set Screws)

CLEVIS SLIDE



P/N	TUBE O.D.	PIN DIA	WT. (g)
66089	7/8"(22.2mm)	1/4"(6.3mm)	90
66189	1"(25.4mm)	1/4"(6.3mm)	95

(With 1/4-28 Set Screws)



P/N	PIN SIZE	FASTENER	WT. (g)
66087	3/8"(10mm)	#10(4)	100

LIFELINE BASE



P/N	CABLE	PIN SIZE	WT. (g)
66205	5/16"(8mm)	3/16"(5mm)	45

JAW SOCKET



P/N	CABLE	WT. (g)
66209	5/16"(8mm)	25

EYE SOCKET



P/N	TUBE O.D.	EYE DIA.	WT. (g)
66092	7/8"(22.2mm)	1/2"(13mm)	200
66192	1"(25.4mm)	.6(15mm)	230

(With 1/4-28 Set Screws)

ELBOW & ANCHOR EYE



P/N	LENGTH PLATE	WT. (g)
41601	3-1/8"(80mm)	100
41602	3-1/2"(89mm)	150
41603	4"(102mm)	230

PAD EYE DIAMOND BASE



P/N	LENGTH PLATE	WT. (g)
41701	3"(76mm)	70
41702	3-1/2"(89mm)	130
41703	4"(102mm)	200

PAD EYE OBLONG BASE



P/N	SLIDE SIZE	WT. (g)
45300	1-1/4"(31.8mm)	250
45301	1"(25.4mm)	150

BLOCK SLIDE



P/N	SLIDE SIZE	WT. (g)
45200	1-1/4"(31.8mm)	370
45201	1"(25.4mm)	350

TRACK SLIDE





END



P/N	SLIDE SIZE	WT. (g)
40901	1-1/4" (31.8mm)	60

DECK FILLS

HOSE DECK FILLS WITH SPLASH GUARD



P/N	DESCRIPTION	HOSE SIZE	FASTENER	WT. (g)
66001	Gas With Chain	1-1/2"(38mm)	#10	430
66002	Gap & Chain For Above		#10	60

PIPE DECK FILLS WITH KEY



P/N	PIPE SIZE	TYPE	FASTENER	CHAIN	WT. (g)
66171	1-1/4"(31.8mm)	Gas	#10(3)		270
66031	1-1/2"(38mm)	Gas	#10(3)	Yes	420
66131	2"(51mm)	Gas	#10(3)	Yes	420
66172	1-1/4"(31.8mm)	Diesel	#10(3)		270
66032	1-1/2"(38mm)	Diesel	#10(3)	Yes	420
66132	2"(51mm)	Diesel	#10(3)	Yes	420
66173	1-1/4"(31.8mm)	Water	#10(3)		270
66033	1-1/2"(38mm)	Water	#10(3)	Yes	420
66133	2"(51mm)	Water	#10(3)	Yes	420
66034	1-1/2"(38mm)	Waste	#10(3)	No	420
66134	2"(51mm)	Waste	#10(3)	No	420
66060	Key				20
66074	Cap & Chain for 1-1/4" Fills (31.8mm)				80
66061	Cap & Chain for 1-1/2" Fills (38mm)		#10		140
66167	Cap & Chain for 2" Fills (51mm)		#10		160

1 1/2" HOSE DECK FILLS WITH KEY



P/N	HOSE SIZE	TYPE	FL	FASTENER	CHAIN	WT. (g)
66123	1-1/2"(38mm)	Gas	3"	#10(3)	Yes	400
66124	1-1/2"(38mm)	Diesel	3"	#10(3)	Yes	400
66125	1-1/2"(38mm)	Water	3"	#10(3)	Yes	400
66126	1-1/2"(38mm)	Waste	3 1/2"	#10(3)	No	510
M024-0099Y1	1-1/2"(38mm)	Waste	3"	#10(3)	No	
66060	Key					
66061	Cap & Chain for 66126					
66074	Cap & Chain for 66123-5					

2" HOSE DECK FILLS WITH KEY



P/N	HOSE SIZE	TYPE	FASTENER	CHAIN	WT. (g)
66394	2"(51mm)	Gas	#10(3)	Yes	570
66395	2"(51mm)	Diesel	#10(3)	Yes	570
66397	2"(51mm)	Water	#10(3)	Yes	
66399	2"(51mm)	Petrol	#10(3)	Yes	
66400	2"(51mm)	Waste	#10(3)	Yes	

"NEW" DECK FILLS**ANGLED - 30 DEGREE ω / RAISED LETTERING**

316 S/S INVESTMENT CAST

P/N	HOSE SIZE	FLANGE	TYPE	FASTENER	CHAIN	WT(G)	KEY
M024-0073Y	1-1/2"	3"	GAS	#10	YES	400g	Yes
M024-0075Y	1-1/2"	3"	WATER	#10	YES	400g	Yes
M024-0135Y	1-1/2"	3"	WASTE	#10	YES	400g	Yes
M024-0136Y	1-1/2"	3"	DIESEL	#10	YES	400g	Yes
66074	Replacement Cap and Chain for 1-1/2" Fills 73Y, 75Y, 135Y, 136Y						
66060	Replacement key for all models						

**ANGLED-30 DEGREE ω / INSET COLORED LETTERING**

316 S/S INVESTMENT CAST

P/N	HOSE SIZE	FLANGE	TYPE	FASTENER	CHAIN	WT(G)	KEY
M024-73YR	1-1/2"	3"	GAS - RED	#10	Yes	400g	Yes
M024-75YB	1-1/2"	3"	WATER-BLUE	#10	Yes	400g	Yes
M024-35YBLK	1-1/2"	3"	WASTE- BLACK	#10	Yes	400g	Yes
M024-36YG	1-1/2"	3"	DIESEL-GREEN	#10	Yes	400g	Yes
M024-0153YG	2"	3-1/2"	DIESEL-GREEN	#10	Yes	570g	Yes
66074	Replacement Cap and Chain for 1-1/2" Fills 73YR, 75YB, 35YBLK, 36YG,						
66167	Replacement Cap and Chain for 2" Fills 0153YG						
66060	Replacement key for all models						



"NEW" DECK FILLS

GGB VENTURES INTERNATIONAL INC.

316 S/S INVESTMENT CAST

KEYLESS TOGGLE CAP DECK FILL

P/N	HOSE SIZE	FLANGE	TYPE	FASTENER	CHAIN	WT(G)
M024-0073YTC	1-1/2" - 30° Angle	3"	GAS	#10	Yes	460g
M024-0075YTC	1-1/2" - 30° Angle	3"	WATER	#10	Yes	460g
M024-0135YTC	1-1/2" - 30° Angle	3"	WASTE	#10	Yes	460g
M024-0136YTC	1-1/2" - 30° Angle	3"	DIESEL	#10	Yes	460g
M024-73YRTC	1-1/2" - 30° Angle	3"	GAS-Red	#10	Yes	460g
M024-75YBTC	1-1/2" - 30° Angle	3"	WATER- Blue	#10	Yes	460g
M024-35YBLKTC	1-1/2" - 30° Angle	3"	WASTE -Black	#10	Yes	460g
M024-36YGTC	1-1/2" - 30° Angle	3"	DIESEL-Green	#10	Yes	460g
66123TC	1-1/2" - Straight	3"	GAS	#10	Yes	460g
66125TC	1-1/2" - Straight	3"	WATER	#10	Yes	460g
M024-0099YTC	1-1/2" - Straight	3"	WASTE	#10	Yes	460g
66124TC	1-1/2" - Straight	3"	DEISEL	#10	Yes	460g
TOGGLE-CAP	Replacement Cap and Chain for all above Models					



GGB- Everest Marine Keyless Fills and Caps are made from Investment cast 316 Stainless Steel. The Keyless Toggle Cap has a Built -In Key for easy cap removal. The hinged Key-Toggle can be pulled into the upright position to open or close the fill, then recessed into the cap for a flush surface. There are two key hole indents on cap for back up use with our standard key if necessary.



DECK FILLS

DECK FILL

P/N	HOSE SIZE	WT. (g)
66344B	2"(51mm)	900
66344A	1-1/2" (38mm)	900



GAS VENTS

P/N	TYPE	HOLE SIZE	HOSE/PIPE	WT. (g)
66004	Straight	3/4"(19mm)	9/16"Hose (14mm)	100



GAS VENTS WITH STAINLESS STEEL SCREENS

P/N	TYPE	HOLE SIZE	HOSE/PIPE	WT. (g)
66023	90°	3/4"(19mm)	9/16"Hose (14mm)	110



GAS VENTS WITH STAINLESS STEEL SCREENS

SS FLUSH GAS VENTS

POLISHED 316SS GAS VENT C/W SS SCREEN, CUPS, AND FASTENERS

PART NUMBER	INSTALLATION HOLE SIZE	HOSE/PIPE SIZE	MAX HULL THICKNESS	ANGLE
GGB-M025-0005Y	1-1/2"(38mm)	9/16"(14mm)	7/16"(11mm)	Straight
GGB-M025-0004Y	1-1/2"(38mm)	9/16"(14mm)	7/16"(11mm)	90 Degree





QUICK RELEASE PIN WITH CABLE AND TAB

MH-30 1/4" O.D. with 7/8" grip
6" SS CABLE – nylon coated with Tab
MH-20 1/4" O.D. with 7/8" grip
6" SS CABLE – No Tab



QUICK RELEASE PIN

MH-15 1/4" O.D. with 7/8" grip



MISCELLANEOUS

SKI RING



P/N	TUBE O.D	BASE	HT.	FASTENER	WT. (g)
66071	7/8"(22.2mm)	2.6"(66mm)	.8"(20mm)	1/4"(3)	140
66072	1"(25.4mm)	2.8"(71mm)	.8"(20mm)	1/4"(3)	145

(With 1/4-28 Set Screws)

FOLDING STEP



P/N	TUBE O.D	BASE	HT.	FASTENER	WT. (g)
66196	1"(25.4mm)	3"x2"(76x51mm)	2"(51mm)	1/4"(4)	230

(With 1/4-28 Set Screws)

PELICAN HOOK



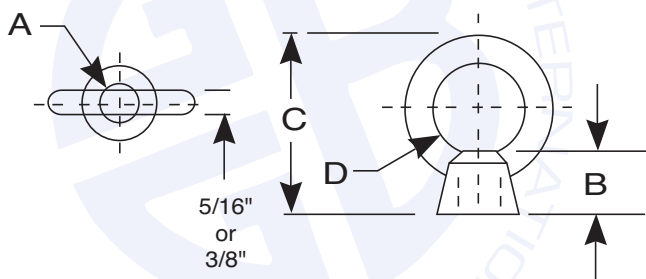
P/N	FOR WIRE ^o	BODY	THREAD	WT. (g)
M028-0831Z	3/16"(4.76mm)	4"(101.6mm)	5/16"	165
M028-0832E	1/4"(6.35mm)	4"(101.6mm)	5/16"	165
M028-0833Z	1/8"(3.17mm)	4"(101.6mm)	5/16"	165

SS EYE NUTS

POLISHED 316SS EYE NUTS

PART NUMBER	INSIDE THREAD DIAMETER (A)	HEIGHT TO INSIDE RING DIAMETER (B)	OVERALL HEIGHT (C)	INSIDE RING DIAMETER (D)
GGB-678110	3/8"NC (10mm)	5/8" (16mm)	1-7/8"(48mm)	1"(25mm)
GGB-678112	1/2"NC (13mm)	7/8"(22mm)	2-3/8"(60mm)	1-3/16"(30mm)

These threaded **Eye Nuts** are designed to be screwed onto various lengths of threaded stock or bolts to accommodate transom thickness.

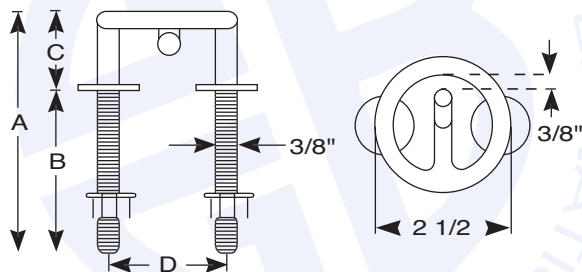


SS SKI TOWS

POLISHED 304SS SKI TOWS

3/8" STOCK @ 2-1/2" O/S RING DIAMETER c/w SS FASTENERS

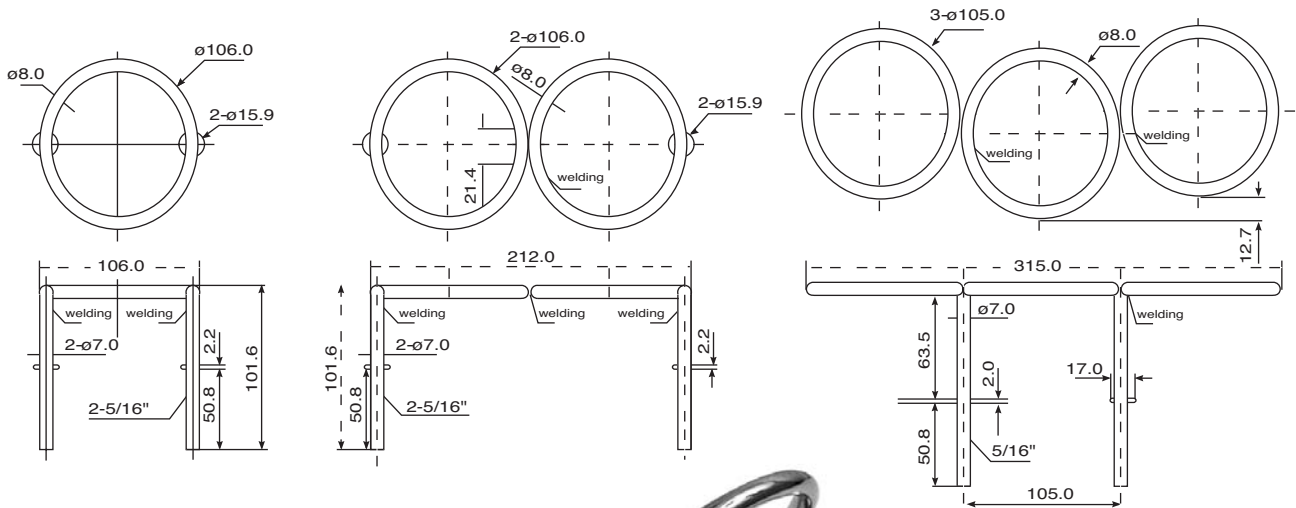
PART NUMBER	OVERALL LENGTH (A)	STUD LENGTH (B)	FLANGE - O/S RING TOP (C)	STUD C/C (D)
GGB-3244	3-15/16"(100mm)	2-7/16"(62mm)	1-1/2"(38mm)	2-1/16"(52mm)
GGB-3244-2	4-7/16"(113mm)	2-15/16"(75mm)	1-1/2"(38mm)	2-1/16"(52mm)



SS TOP MOUNT DRINK HOLDERS

POLISHED 316SS DRINK HOLDERS (5/16" STOCK) C/W SS FASTENERS.
SINGLE-1, DOUBLE-2, AND TRIPLE-3

PART NUMBER	INSIDE RING DIAMETER (I.D.)	OUTSIDE RING DIAMETER (O.D.)	ABOVE DECK WHEN INSTALLED	TOTAL WIDTH
GGB-8275-1	3-5/16"(84mm)	4"(102mm)	3-1/4"(83mm)	4-1/6"(106mm)
GGB-8275-2	3-5/16"(84mm)	4"(102mm)	3-1/4"(83mm)	8-3/8"(212mm)
GGB-8275-3	3-5/16"(84mm)	4"(102mm)	3-1/4"(83mm)	12-2/5"(315mm)





P/N	OVERALL LENGTH	STUD LENGTH	FLANGE - O/S RING TOP	STUD HOLE CENTERS
GGB-4000.2750	4"(102mm)	2-1/2"(64mm)	1-5/8"(41mm)	2-1/16"(52mm)

- Investment Cast Polished 316SS Customized with Logo.
C/W SS Washers & Nuts
- Weight 300grams



SS FLUSH DROP-IN DRINK HOLDER

P/N	INSIDE DIAMETER (I.D)	OUTSIDE DIAMETER (O.D)	OUTSIDE FLANGE DIAMETER	TOTAL DEPTH (BELOW FLUSH)
GGB-8277	3"(75mm)	3-5/8"(92mm)	4-1/8"(105mm)	3-5/8"(92mm)

- Electro-Polished 316SS Drink Holder c/w
1/4" Drainage Nipple
- Weight 177 grams



HDG & 316 SS INVESTMENT CAST ANCHORS

DIAMOND

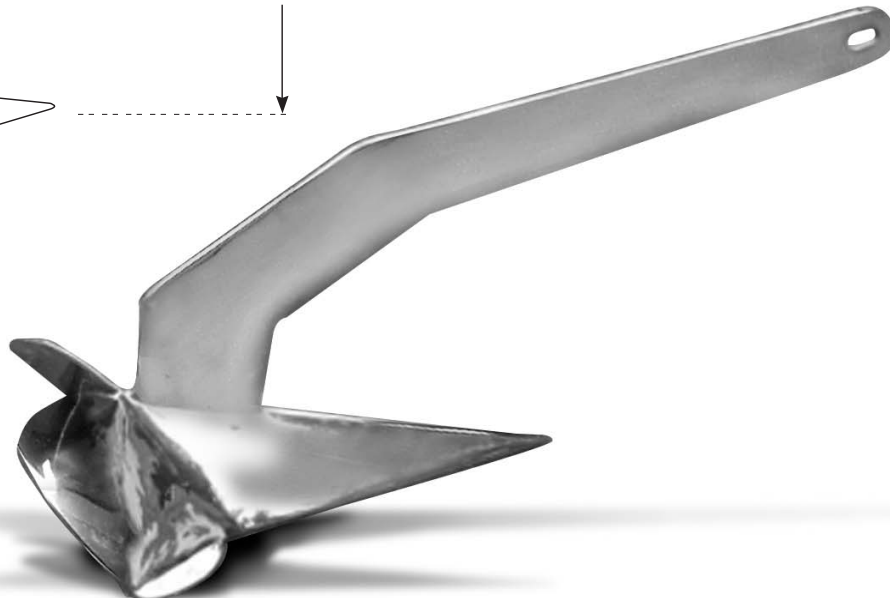
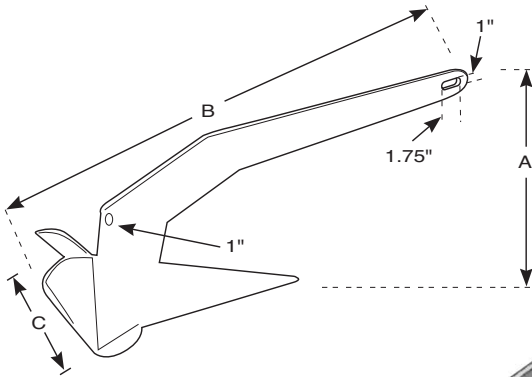
A Diamond style Anchor Supplied by GGB Ventures International

316SS PART NUMBER	WT (LBS)	WT (KGS)	AVAILABLE IN BOTH 316SS AND HD GALVANIZED MODELS
GGB-DIAMOND-14	16.5	7.5	316SS DIAMOND Anchor Investment Cast Mirror Finish @ 16.5 Lbs
GGB-DIAMOND-22	22	10	316SS DIAMOND Anchor Investment Cast Mirror Finish @ 22 Lbs
GGB-DIAMOND-33	33	15	316SS DIAMOND Anchor Investment Cast Mirror Finish @ 33 Lbs
GGB-DIAMOND-44	44	20	316SS DIAMOND Anchor Investment Cast Mirror Finish @ 44 Lbs

316SS PART NUMBER	WT (LBS)	WT (KGS)	AVAILABLE IN BOTH 316SS AND HD GALVANIZED MODELS
GGB-DIAMOND-14G	16.5	7.5	HDG DIAMOND Anchor Cast Bright Finish @ 16.5 Lbs
GGB-DIAMOND-22G	22	10	HDG DIAMOND Anchor Cast Bright Finish @ 22 Lbs
GGB-DIAMOND-33G	33	15	HDG DIAMOND Anchor Cast Bright Finish @ 33 Lbs
GGB-DIAMOND-44G	44	20	HDG DIAMOND Anchor Cast Bright Finish @ 44 Lbs

DIAMOND Nominal Dimensions in inches (mm)

DIMENSION/WT	16.5	22	33	44
A	10.5 (414)	12.2 (480)	14.4 (566)	15.8 (620)
B	24 (606)	26 (1022)	31 (1209)	34 (1333)
C	10.4 (411)	11.4 (450)	13.6 (535)	15.2 (597)



316 SS INVESTMENT CAST ANCHOR

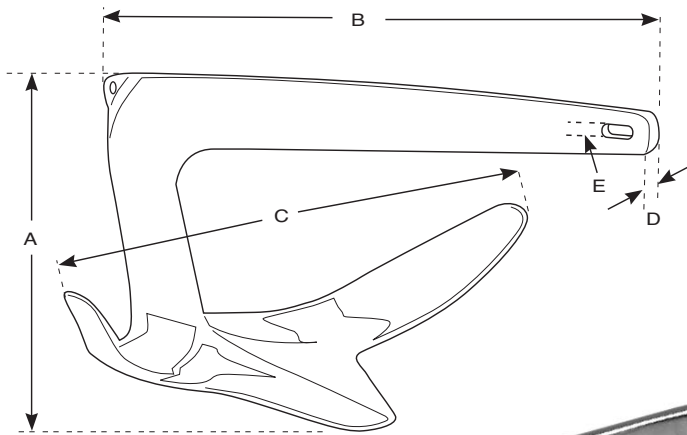
CLAW

A Bruce style "CLAW" Anchor Supplied by GGB Ventures International

GGB PART NUMBER	WT (LBS)	WT (KGS)	GALVANIZED CLAW AVAILABLE FROM 11LBS-44LBS
GGB-66ANC.11	11	5	316SS CLAW Anchor Investment Cast Mirror Finish @ 11Lbs
GGB-66ANC.17	16.5	7.5	316SS CLAW Anchor Investment Cast Mirror Finish @16.5Lbs
GGB-66ANC.22	22	10	316SS CLAW Anchor Investment Cast Mirror Finish @ 22Lbs
GGB-66ANC.34	33	15	316SS CLAW Anchor Investment Cast Mirror Finish @ 33Lbs
GGB-66ANC.44	44	20	316SS CLAW Anchor Investment Cast Mirror Finish @ 44Lbs
GGB-66ANC.66	66	30	316SS CLAW Anchor Investmant Cast Mirror Finish @ 66Lbs

CLAW Nominal Dimensions in inches (mm)

DIMENSION/WT	11	16.5	22	33	44	66
A	9.5 (240)	10.8 (273)	11.5 (292)	13.5 (342)	14.7 (372)	16.1 (410)
B	18.5 (469)	21 (531)	23 (583)	25.8 (655)	27.6 (700)	31.1 (790)
C	12.4 (315)	14.2 (361)	15.2 (385)	17.1 (433)	18.0 (458)	20.7 (525)
D	0.39 (10)	0.40 (10.5)	0.47 (12)	0.53 (13.5)	0.73 (18.5)	0.59 (15)
E	0.39 (10)	0.40 (10.5)	0.47 (12)	0.53 (13.5)	0.73 (18.5)	0.59 (15)



HDG & 316 SS INVESTMENT CAST ANCHORS

PLOW

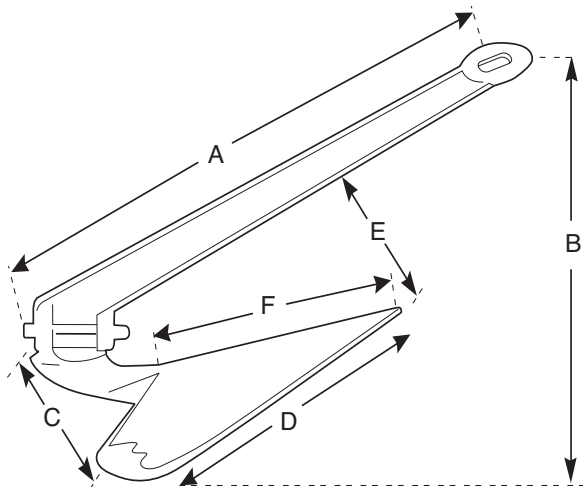
A PLOW style Anchor Supplied by GGB Ventures International

316SS PART NUMBER	WT (LBS)	WT (KGS)	AVAILABLE IN BOTH 316SS AND HD GALVANIZED MODELS
GGB-PLOW-11	11	5	316SS PLOW Anchor Investment Cast Mirror Finish @ 11Lbs
GGB-PLOW-33	33	15	316SS PLOW Anchor Investment Cast Mirror Finish @ 33Lbs
GGB-PLOW-44	44	20	316SS PLOW Anchor Investment Cast Mirror Finish @ 44Lbs
GGB-PLOW-60	59.4	27	316SS PLOW Anchor Investment Cast Mirror Finish @ 59.4Lbs
GGB-PLOW-75	75	34.1	316SS PLOW Anchor Investment Cast Mirror Finish @ 75Lbs

HDG PART NUMBER	WT (LBS)	WT (KGS)	AVAILABLE IN BOTH 316SS AND HD GALVANIZED MODELS
GGB-GALPLOW.33	33	15	HDG PLOW Anchor Cast Bright Finish @ 33Lbs
GGB-GALPLOW.50	49	22	HDG PLOW Anchor Cast Bright Finish @ 49Lbs

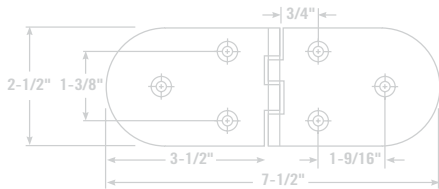
PLOW Nominal Dimensions in inches (mm)

DIMENSION/WT	33	44	59.4	60	75
A	30 (762)	35.4 (899)	34.7(880)	44.5(1130)	46.9(1190)
B	17.7 (452)	17.7 (452)	18.1(460)	13(330)	15.4(390)
C	12.6 (320)	13.2 (335)	13.6(345)	17.7(450)	18.9(480)
D	17.7 (450)	20.1 (510)	19.3(490)	23.2(590)	26.8(681)
E	14 (355)	12.6 (320)	13.2(335)	9.8(250)	11.4(450)
F	10 (254)	11.4 (450)	11.4(450)	11(280)	11.4(450)





NEW EURO STYLE HINGES



316 S/S INVESTMENT CAST

These hinges are cast from high-quality 316 stainless steel. Available in Stud or countersunk mounting styles. Designed in a variety of sizes for applications on cabin and cockpit boxes, doors, etc. Custom sizes available upon request.

APPLICATION

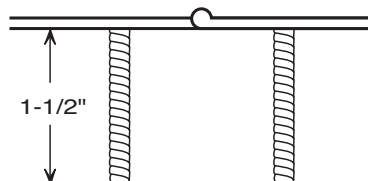
The hinge pin design allows lids to open a full 180-Degree. The highly polished cast Stainless Steel Finish provides a high quality appearance.

DURABILITY

Cast from 316 S/S promotes years of maintenance free service.

INSTALLATION

Countersunk hinges attach with either 1/4" or # 8 Fastener. Studded hinges accommodate 1/4"-20 nuts.



NEW EURO STYLE HINGES

GGB VENTURES INTERNATIONAL INC.



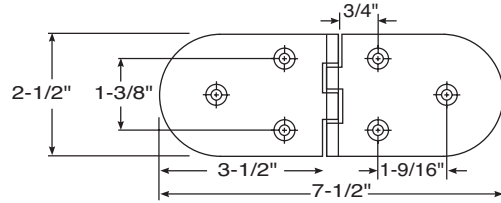
EQUAL LENGTH PLATES w/ ROUNDED ENDS

M022-0130Y



M022-0130YS

DESCRIPTION	FASTENER QUANTITY	BULK PACKAGING
#8 FASTENER	6	M022-0130Y
1/4" STUD	6	M022-0130YS



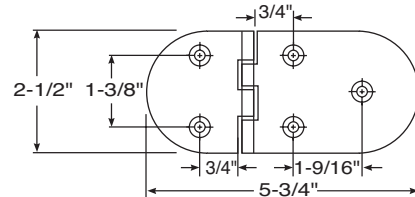
LONG / SHORT PLATE, w/ ROUNDED ENDS

M022-0128Y



M022-0128YS

DESCRIPTION	FASTENER QUANTITY	BULK PACKAGING
#8 FASTENER	5	M022-0128Y
1/4" STUD	5	M022-0128YS



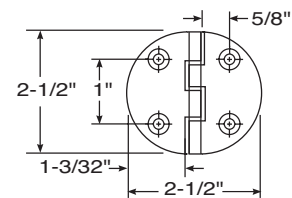
FULL ROUND PLATE DESIGN

M022-0126Y



M022-0126YS

DESCRIPTION	FASTENER QUANTITY	BULK PACKAGING
#8 FASTENER	4	M022-0126Y
1/4" STUD	4	M022-0126YS



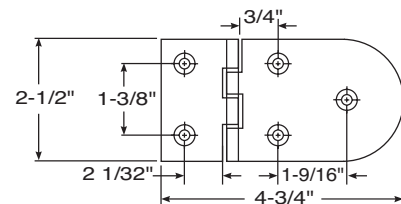
LONG ROUND END PLATE / AND SHORT SQUARE END PLATE.

M022-0129Y



M022-0129YS

DESCRIPTION	FASTENER QUANTITY	BULK PACKAGING
#8 FASTENER	6	M022-0129Y
1/4" STUD	6	M022-0129YS

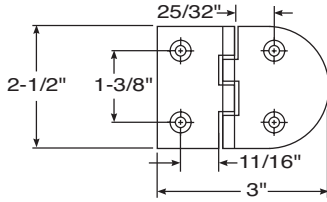




NEW EURO STYLE HINGES

DESCRIPTION	FASTENER QUANTITY	BULK PACKAGING
-------------	-------------------	----------------

#8 FASTENER	4	M022-0127Y
1/4" STUD	4	M022-0127YS



SHORT ROUND END PLATE / AND SHORT SQUARE END PLATE

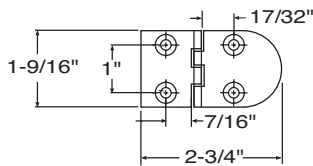


M022-0127Y

M022-0127YS

DESCRIPTION	FASTENER QUANTITY	BULK PACKAGING
-------------	-------------------	----------------

#8 FASTENER	4	M022-0131Y
1/4" STUD	4	M022-0131YS



SMALL -SCALE SHORT ROUND END PLATE / AND SHORT SQUARE END PLATE

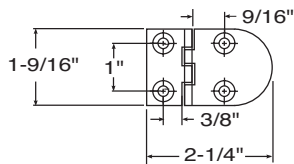


M022-0131Y

M022-0131YS

DESCRIPTION	FASTENER QUANTITY	BULK PACKAGING
-------------	-------------------	----------------

#8 FASTENER	4	M022-0132Y
1/4" STUD	4	M022-0132YS



SMALLEST HINGE SHORT ROUND END PLATE / AND SHORT SQUARE END PLATE.

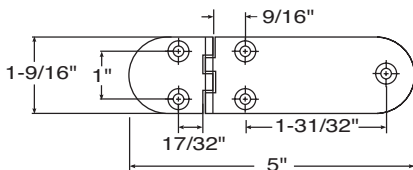


M022-0132Y

M022-0132YS

DESCRIPTION	FASTENER QUANTITY	BULK PACKAGING
-------------	-------------------	----------------

#8 FASTENER	5	M022-0134Y
1/4" STUD	5	M022-0134YS



STRAP HINGE WITH SHORT / LONG ROUNDED ENDS



M022-0134Y

M022-0134YS

NEW EURO STYLE HINGES

GGB VENTURES INTERNATIONAL INC.



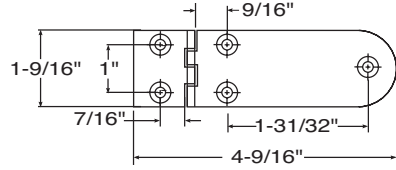
STRAP HINGE WITH SHORT SQUARE / LONG ROUND ENDS

M022-0133Y



M022-0133YS

DESCRIPTION	FASTENER QUANTITY	BULK PACKAGING
#8 FASTENER	5	M022-0133Y
1/4" STUD	5	M022-0133YS

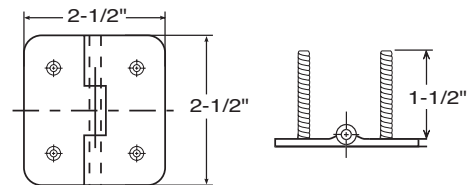


FULL SQUARE PLATE DESIGN, w/ RADIUSED CORNERS, STUD ONLY

M022-0174YS



DESCRIPTION	STUD QUANTITY	BULK PACKAGING
1/4" STUD	4	M022-0174YS

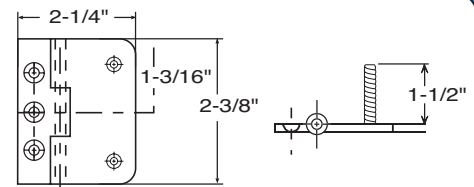


HALF SQUARE PLATE DESIGN, w/ RADIUSED CORNERS

M022-0177YS



DESCRIPTION	FASTENER/STUD QUANTITY	BULK PACKAGING
1/4" STUD	3/2	M022-0177YS
#8 FASTENER		

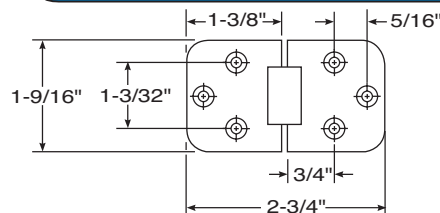


SQUARE END 2-PIN HINGE w/ RADIUSED CORNERS, FASTENER ONLY

M022-0111Y



DESCRIPTION	FASTENER QUANTITY	BULK PACKAGING
#10 FASTENER	6	M022-0111Y



[GGB] - TERMS AND CONDITIONS OF SALE

Except where it is otherwise agreed in writing, acceptance of delivery of any or all goods by a Purchaser shall constitute consent by the Purchaser to these terms of Sale.

Quotations - All quotations are subject to change without notice. Subject to prior sale and unless otherwise agreed are binding only as specified. All sales are made subject to strikes, accidents or other causes of any kind.

Prices - Prices are subject to change without notice. All orders will be invoiced at prices in effect at the time of shipment. Possession of a price list or quotation is not accepted by GGB as an obligation to sell, or offer goods listed therein to anyone.

Credit Approval - Orders are subject to approval by our credit department. First-time customers can expect a first order to be shipped COD.

Suspension of Performance - If in our judgement reasonable doubt exists as to your financial responsibility or if you are past due in payment of any amount owing to GGB, we reserve the right, without liability and without prejudice to any other remedies, to suspend performance, decline to ship, to stop any material in transit, until GGB receives payment of all amounts owing to us, or adequate assurance of such payment whether or not due.

Terms of Payment - Unless otherwise expressly provided, payment shall be due 30 days from the date of each invoice, without discount. Any cash discount which may be expressly provided for, applies only to the sale price of the goods at the shipping point, and does not apply to any charges made for taxes, storage, loading and transportation.

Taxes - Any taxes, which under any existing or future law, we may be required to pay or collect with respect to the sale, purchase, delivery, storage, processing, use, consumption or transportation of any goods and services covered shall, if not separately shown, be added as a separate item to the quoted price, and shall be paid by you to GGB on demand. The foregoing shall not apply to any taxes, the payment of collection of which by us is excused by reason to GGB of valid tax exemption certificates.

Title - Title of goods does not pass to purchaser until goods are paid in full.

Setoff - You authorize us to apply toward payment of any moneys that become due to GGB hereunder and any sums which may be owed to you by GGB, or by any subsidiary or affiliated company of either of us.

Cancellation - A contract may be cancelled or modified only by written agreement by us.

Claims - If any goods received by you are damaged, or if the quantities received by you do not agree with the quantities indicated on the shipping documents, and if you intend to assert any claim against GGB on this account, you shall mark an exception on your receipt to the carrier and shall, within 15 days after receipt of such goods, furnish us detailed written information as to any damage or shortage. You shall advise us in writing within 30 days after receipt of any goods, of any other claim you may have against us with respect to such goods. If you have any other claims against us with respect to such goods, you shall afford us a reasonable opportunity to inspect such goods. Any action for or breach of this contract must be commenced within one year after the cause of action shall accrue, and no such action may be maintained by you which is not commenced within such period.

Compliance With Laws - Any clause required to be included in a contract by any applicable law, or by any administrative regulations having the effect of law, is hereby incorporated herein.

Shipments - Unless otherwise expressly stated, shipment may be by carrier or other means selected by GGB.

Returned Goods - Written permission and an "RGA" number must be obtained before returning any product. Transportation costs on returned product shall be to the buyers account. Products returned in saleable condition will be subject to a restocking charge (25%) twenty five percent minimum. Specials and/or non-stock items are not subject to return.

Limited Warranty - We warrant only that the goods will conform to their description as herein stated, subject to tolerances and variations described by our manufacturers' specification. We make no other warranty. Express or implied and specifically disclaim and exclude any and all warranties of merchantability and fitness for a particular purpose. GGB will replace any defective (at the discretion of GGB) marine part sold to its customers within North America prepaid to customer's choice location.

Limitation of Liability - Your exclusive remedy for breach of contract as to any term hereof, and our only liability for any such breach, shall be replacement or repair of such goods, or repayment to you the purchase price paid by you for such goods, whichever such remedy we shall select, and if we select to repay, the purchase price of any such goods and so advise you, you must return such goods to us immediately. In no event will we be liable for incidental or consequential damages, including but not limited to loss of revenue or profits or any other special damages.

Entire Agreement - The terms set forth herein constitute the sole terms and conditions upon which we offer goods for sale. Any Purchase Order (PO) you issue to us shall constitute your unconditional agreement to be bound exclusively by the foregoing Terms and Conditions of Sale. We hereby object to any different terms that may be in your PO.